



MV-CJ 69-kV transmission line rebuild

Great River Energy, wholesale power supplier to Minnesota Valley Electric Cooperative and BENCO Electric Cooperative, owns the MV-CJ 69-kV transmission line in Le Sueur County. This 8.7-mile line was built in the early 1980s. The line is being rebuilt to improve the reliability of the electric transmission system in the area and reduce risks associated with low voltage and transmission line overloading.

Great River Energy is planning to rebuild the transmission line along the existing corridor using existing rights. In some locations, deviations from the existing centerline may be necessary and may require new or amended easements which will be discussed with individual landowners.



Typical 69-kV wood single circuit structure with distribution underbuild.

Overview

The map on the back shows the existing 69-kV transmission line to be rebuilt. Beginning at the Cleveland Substation, the line runs south on County Road 15 to County Road 16. It follows County Road 16 for 2 miles to 610th Avenue where the line runs 0.75 miles south to 239th Street. The line runs east along 238th Street until the Jamestown Switch at George Lake. The transmission line will be rebuilt using single wood poles generally 55 to 75 feet above ground, placed 300 to 400 feet apart. Directional changes or angles may require guy wires and anchors to stabilize poles. In certain situations, engineered laminated wood poles or steel poles may be installed.

Permits & Easements

Great River Energy will work with county, state and federal government agencies to secure all necessary permits or permissions necessary for the project (e.g., conditional use, environmental, construction).

Great River Energy has existing easement rights to rebuild, operate and maintain the transmission line. The easement area will continue to be maintained by clearing trees and vegetation to allow for the safe operation of the line. Some areas may require additional or amended easement rights. Landowners will be notified of the project construction dates and major activities.

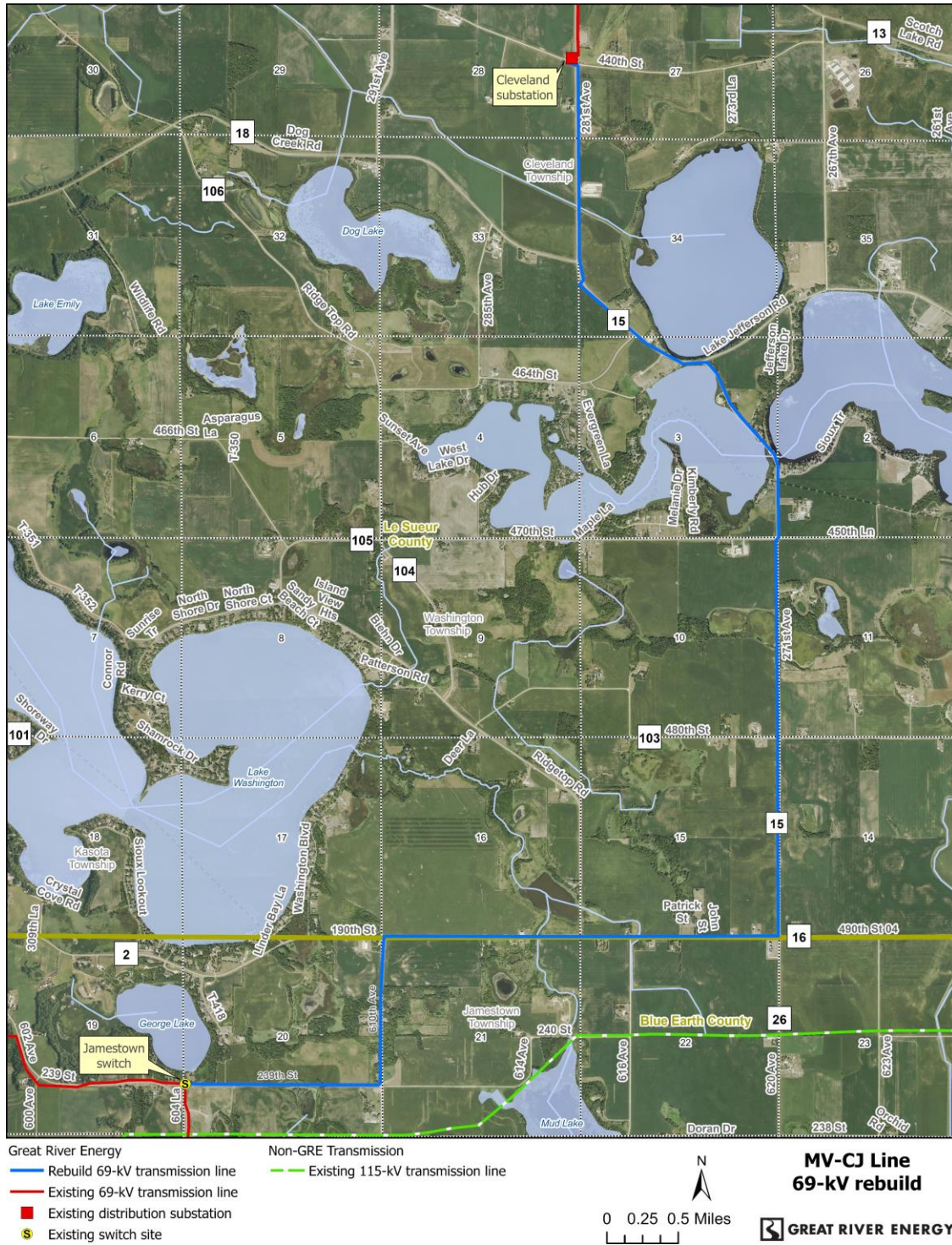
Schedule

Notifications/Survey	Winter/Spring 2026
Easements/ Environmental permits	Spring/Summer 2026
Engineering Design	Spring/Summer 2026
Transmission line construction	2027

Quick facts

- Length** – 8.77 miles
- Voltage** – 69-kV
- Structures** – Wood, laminated, steel poles
- Spans** – 300 to 400 feet apart

Proposed project



Great River Energy representatives

For project updates and information contact:

Madalynn Brendon
 Land Rights Field Representative
 612-790-6300 | mbrendon@grenergy.com

Michael Swenson
 Transmission – Permitting Specialist
 952-807-4537 | mswenson@grenergy.com

About Great River Energy

Great River Energy is a not-for-profit wholesale electric power cooperative which provides electricity to approximately 1.7 million people through its member-owner cooperatives and customers. Through our member-owners, we serve two-thirds of Minnesota geographically and parts of Wisconsin.