

SP 69-kV Transmission Rebuild Project

Great River Energy, wholesale electric supplier to Connexus Energy, is planning to rebuild approximately 11 miles of 69,000-volt (69-kilovolt or 69-kV) overhead transmission line in the cities of Ham Lake and Blaine in Anoka County. The SP transmission line, originally constructed in the 1950s, requires rebuilding due to its age and condition, to enhance the reliability of the electrical power supply.



Typical 69-kV wood structure.

Overview

This project involves the construction of approximately 11 miles of transmission line from the Soderville Substation, located at the corner of Minnesota Highway 65 and County Road 18, to the Blaine Substation, located south of the County Road 14 and Lexington Avenue Northeast intersection (see map on back). The transmission line will be rebuilt along the existing corridor as follows:

- From the Soderville Substation, the line will run north for approximately 0.23 miles and then turn east approximately 0.56 miles to Swedish Drive Northeast.
- It will then head south for approximately 1.75 miles to County Road 60, turning east to run approximately one mile to Xylite Street Northeast.
- The line will continue south for approximately 1.76 miles along Xylite Street Northeast to 149th Avenue Northeast, then turn easterly for approximately one mile to Naples Street and then proceed south for approximately one mile to Bunker Boulevard Northeast.
- Finally, it will follow Bunker Boulevard Northeast for approximately one mile east to Lexington Avenue Northeast and turn to run south for approximately 2.5 miles to terminate at the Blaine Substation.

Public involvement

Great River Energy will hold a joint meeting with all interested parties at a location near the project. Great River Energy and Connexus Energy will be reaching out to individual landowners along the route to discuss the project and address any concerns. Mailers will be sent periodically updating landowners of the project status.

Permits and easements

Great River Energy will work with county, state, and federal agencies to secure all necessary permits (e.g., Conditional Use, environmental, construction).

Great River Energy has existing easement rights to rebuild, operate, and maintain the transmission line. The easement area will be maintained by clearing all trees and vegetation to 35 feet on either side of the line. This is necessary for the safe operation of the line. Some areas may require additional or amended easement rights. Landowners will be notified of the project construction dates and major activities. Great River Energy welcomes project questions, comments, and feedback.

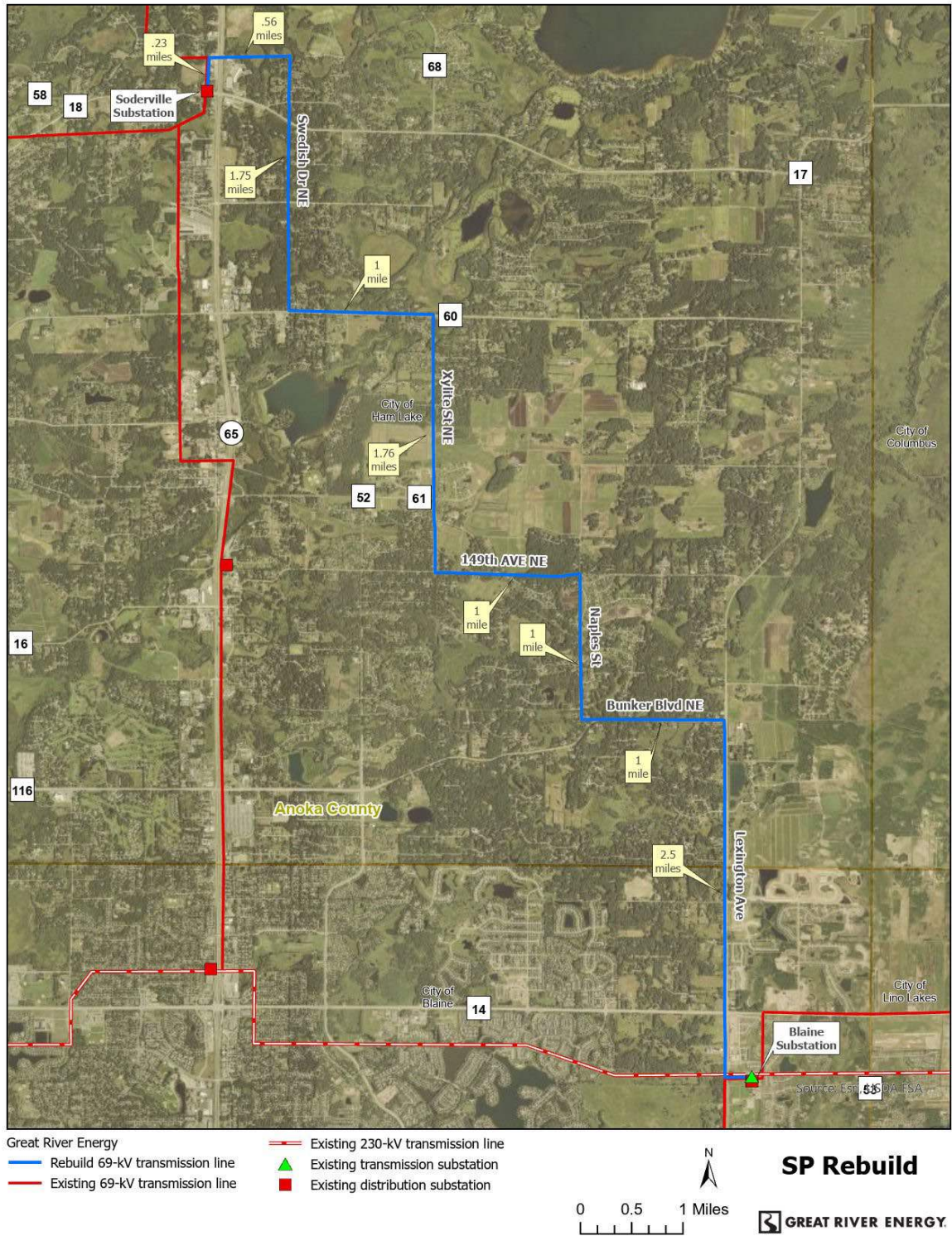
Schedule

Notifications	Winer/Spring 2026
Project permitting	2026 – 2027
Survey/design	Summer 2026 – Spring 2027
Easements/ Environmental permits	Spring – Fall 2027
Transmission line construction	Fall 2027 – 2028
Energization	Oct 2028

Quick facts

- Length** – Approximately 11 miles
- Voltage** – 69-kV
- Structures** – Wood/Steel/Laminate poles
- Spans** – 275 to 375 feet apart
- Right of way** – 70-foot-wide (35 feet each side of center of pole line)

Proposed project



Great River Energy representatives

For project updates and information, visit greatriverenergy.com/SP or contact:

Anson Belcourt
 Senior Field Representative | Land Rights
 612-349-0081 | abelcourt@grenergy.com

Marsha Parlow
 Permitting Specialist | Transmission Permitting
 612-345-1212 | mparlow@grenergy.com