



**GREAT
RIVER
ENERGY®**

Great River Energy
12300 Elm Creek Blvd
Maple Grove, MN 55369
763-445-5000
grenergy.com



**McLeod Cooperative
Power Association**
3515 11th Street East
Glencoe, MN 55336
1800-494-6272

Winthrop to Bell 69-kV transmission line rebuild

Great River Energy, wholesale electric supplier to McLeod Cooperative Power Association, is planning to rebuild an existing 12.1-mile 69-kilovolt (kV) transmission line located in McLeod County (see map on back). This rebuild is necessary to improve the reliability of the area transmission system, and reduce risks associated with low voltage and system overloading.

Overview

The existing transmission line extends from McLeod Cooperative Power Association's Bell Substation located in Section 30 in Hassan Valley Township to their Winthrop Substation located in Section 30 in Penn Township. Much of the line is currently located within the east State Highway 15 right-of-way (ROW) and is proposed to be rebuilt on private property on the east side in most areas, in a location that would be 2 to 5 feet outside of the edge of the road ROW. In areas that are developed as smaller residential parcels and in environmentally sensitive areas, the line may be rebuilt in the Highway 15 ROW.

The transmission line generally requires a 70-foot wide easement, 35 feet on each side of the transmission centerline. Wood poles will primarily be used. Steel and/or laminate poles may be used in some locations based on engineering needs. Poles will be placed to not interfere with agricultural land uses to the extent possible. It will be necessary to remove vegetation within the easement area for construction access and the safe operation and maintenance of the line, which will be discussed with landowners during easement negotiations.



Typical 69-kV single circuit structure

Permits and easements

The project will require a Conditional Use Permit (CUP) from McLeod County. Great River Energy will acquire easements for the transmission line and any temporary construction needs outside of a permanent easement. Permits from road authorities, environmental agencies and other utilities will begin once the project has local approval and preliminary design is complete.

Public involvement

Great River Energy will hold an open house to share project information with landowners, local government officials and permit authorities. After the open house, Great River Energy will submit a CUP application with McLeod County. Landowners will be contacted after the CUP is approved and preliminary design is completed to discuss construction access and practices, the easement and compensation, vegetation removal, and restoration.

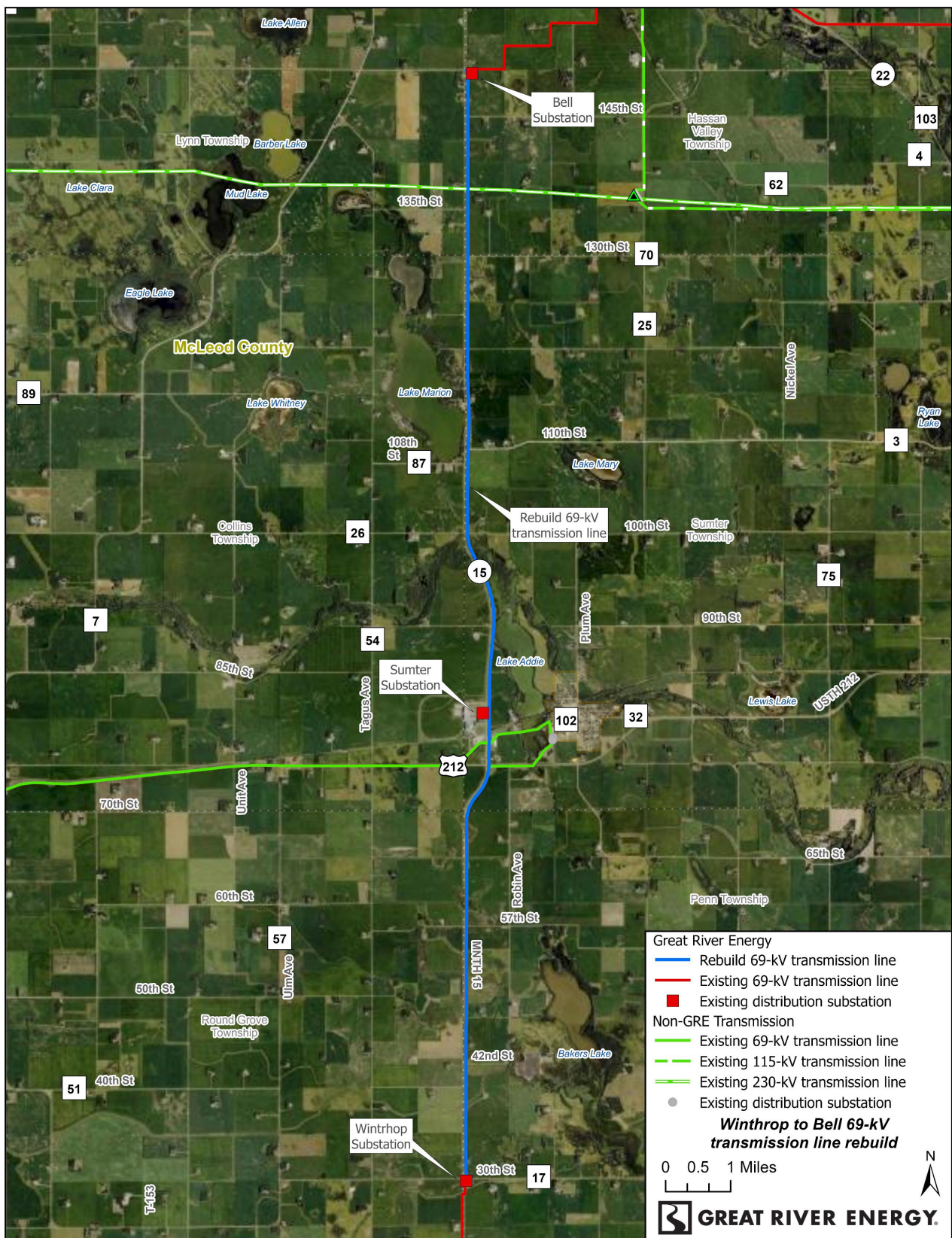
Schedule

Notifications	Summer 2025
Project permitting	Fall 2025
Survey/design	Spring 2026
Easements/permits	Spring 2026 – Spring 2027
Transmission line construction	Spring 2027 – Fall 2028
Energization	Fall 2028

Quick facts

Length – Approximately 12.1 miles
Voltage – 69-kV
Poles – Primarily wood; steel and/or laminate where needed for engineering design
Spans – 350 to 450 feet apart
Right of way – 70-foot-wide (35 feet each side of transmission centerline)

Proposed project



Great River Energy representatives

For project updates and information, visit greatriverenergy.com/WinthroptoBell or contact:

Michelle Lommel
Senior Field Representative | Land Rights
763-445-5977 | mlommel@greenergy.com

Marsha Parlow
Transmission Permitting Specialist | Transmission Permitting
763-445-5215 | mparlow@greenergy.com