

LR-PC 115-kV transmission line upgrade project

Great River Energy, wholesale electric supplier to Lake Region Electric Cooperative, proposes to rebuild and upgrade approximately 16 miles of an existing 115-kilovolt (kV) overhead transmission line in Cormorant Township, in southern Becker County, and Scambler and Pelican Townships, in northwest Otter Tail County. The transmission line rebuild is needed to enable Lake Region Electric Cooperative to reliably serve their members’ electrical power needs.



Typical 115 kV single circuit h braced post structure

Overview

This project will include replacing existing H-frame structures primarily with direct-embedded steel poles, 90 feet above ground and 625-675 feet apart. Specialty poles may be required in some areas, with different size/type poles and spans.

Public involvement

Great River Energy will hold a meeting in the form of an “open house” to provide project information. You are invited to attend the open house to review the project details and provide input. Great River Energy and Lake Region Electric Cooperative staff will be available at the open house to discuss the project schedule, construction activities, and answer questions.

Permits and easements

Great River Energy will work with other state, county, township and local authorities to acquire all approvals necessary to complete the work. Great River Energy will contact landowners along the proposed transmission line route to discuss easement agreements, tree removal, construction access and practices, and restoration.

About Great River Energy

Great River Energy is a not-for-profit wholesale electric power cooperative which provides electricity to approximately 1.7 million people through its member-owner cooperatives and customers. Through our member-owners, we serve two-thirds of Minnesota geographically and parts of Wisconsin.

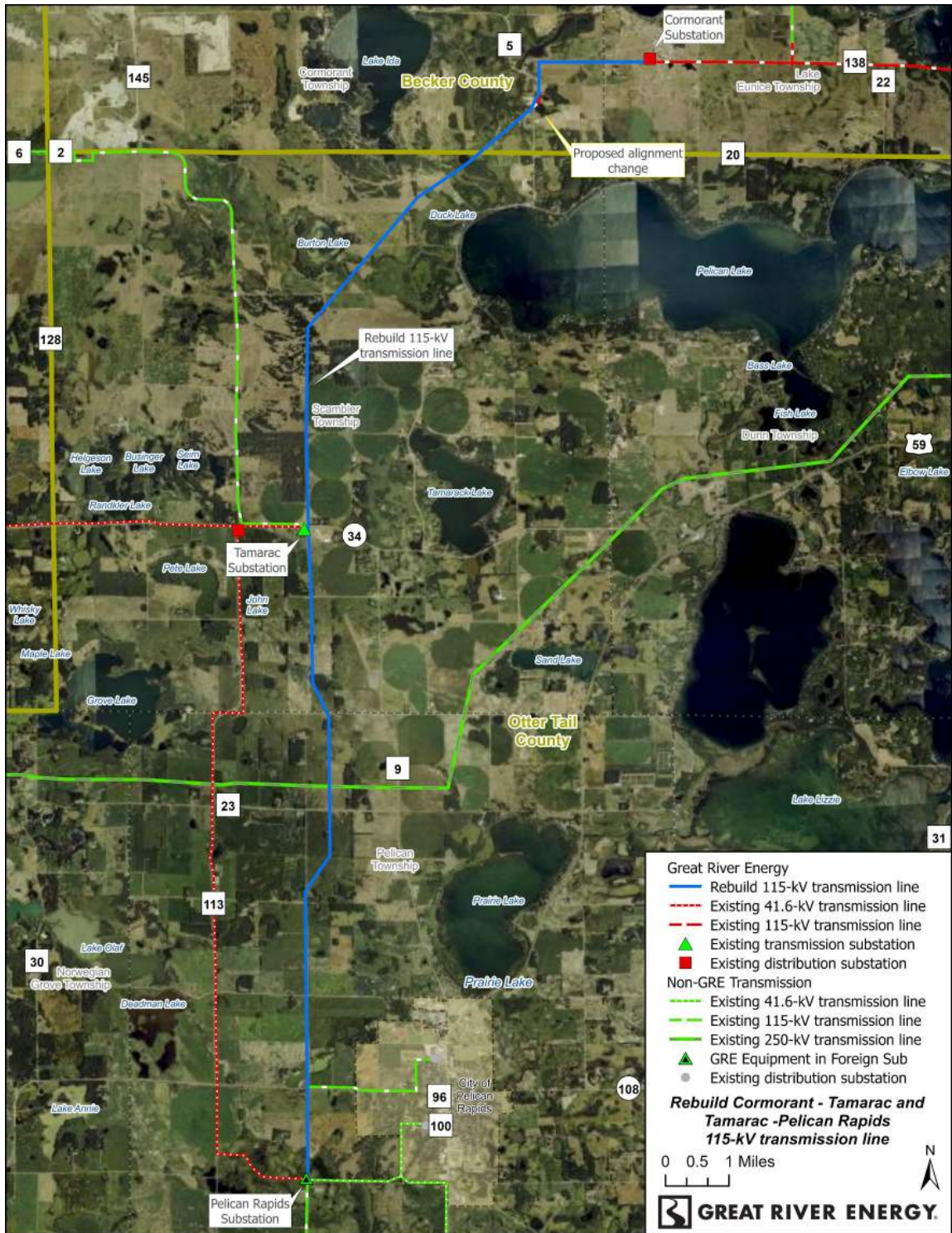
Schedule

Notifications	Summer 2025
Survey/design	Summer 2025 – Fall 2026
Easements/ Environmental permits	Winter 2025 – Summer 2026
Transmission line construction	Fall 2026 – Fall 2028
Energization	Dec 2028

Quick facts

- Length** – Approximately 16 miles
- Voltage** – 115-kV
- Structures** – Steel poles, approximately 90ft above ground
- Spans** – 625 to 675 feet apart
- Right of way** – 100-foot-wide (50 feet each side of center of pole line)

Proposed project



Great River Energy representatives

For project updates and information, visit greatriverenergy.com/LRPC or contact:

Anson Belcourt
 Sr. Field Representative | Land Rights
 763-349-0081 | abelcourt@grenergy.com

Michael Swenson
 Transmission Permitting Specialist
 763-445-5979 | mswenson@grenergy.com