



Willmar-Litchfield-Forest City-Hut kV Transmission Line

Great River Energy, Southern Minnesota Municipal Power Agency, City of Litchfield and Hutchinson Municipal Utilities, are proposing to construct approximately 70 miles of 115-kilovolt (kV) transmission line between Willmar, Litchfield, Forest City, and Hutchinson Minn. (Project). A Certificate of Need and Route Permit will be required from the Minnesota Public Utilities Commission (MPUC) before the line can be built. Additional project information will be provided at greatriverenergy.com/Willmar-Hutchinson.

Need

Existing transmission lines were constructed in the 1950s and need replacement. The project will also enhance reliability and allow for additional load growth throughout the project area and beyond.

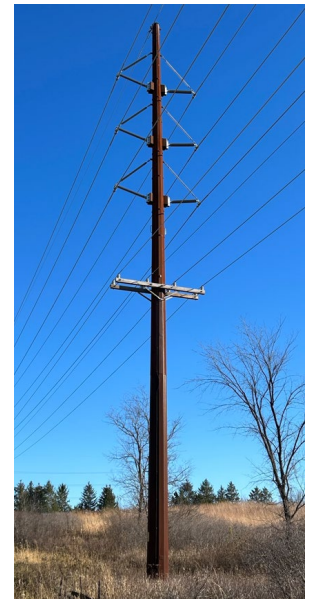
Overview

The map on the back shows the proposed 115-kV transmission line route. Approximately 50 miles of the proposed route will overtake and replace existing 69-kV transmission lines with the new 115-kV transmission line. Approximately 20 miles of the new 115-kV transmission line will be constructed in new right-of-way.

The new transmission line will be constructed primarily with wood poles, 70 to 90 feet above ground, generally 350 to 400 feet apart. Line angles and changes in direction might require the support of guy wires and anchors or steel poles on concrete foundations. A final design will determine the span distances and need for specialty poles.

Permitting and public involvement

Construction of the Project cannot begin until the MPUC issues a Certificate of Need and a Route Permit. An environmental assessment will be prepared as part of the application. The MPUC will hold public meetings and hearings as part of their



Typical 115-kV structures

review, and interested parties are welcome to provide comments and input throughout the permitting process.

The utilities involved in the project will work with county, state and federal agencies to secure road crossing permits and any other required environmental or construction permits. Contact information for Great River Energy representatives is listed on the back of this page.

Easements

New or amended easements may be requested to provide adequate land rights for construction, operation and maintenance of the new line. Property owners will be contacted by a project representative to review permitting and easement acquisition. Easement negotiations will begin once the route permit is issued—a copy will be provided to landowners. Negotiations include proposed pole locations, review of the easement and compensation, information on tree removal, construction access, crop damage payments, and restoration.

Schedule

PUC Permitting	Q1 2026 – Q3 2027
Easements	Q3 2027 – Q4 2027
Environmental permits	Q3 2027 – Q2 2027
Transmission line construction	Q2 2028 – Q4 2031

Quick facts

Length – Approximately 70 miles

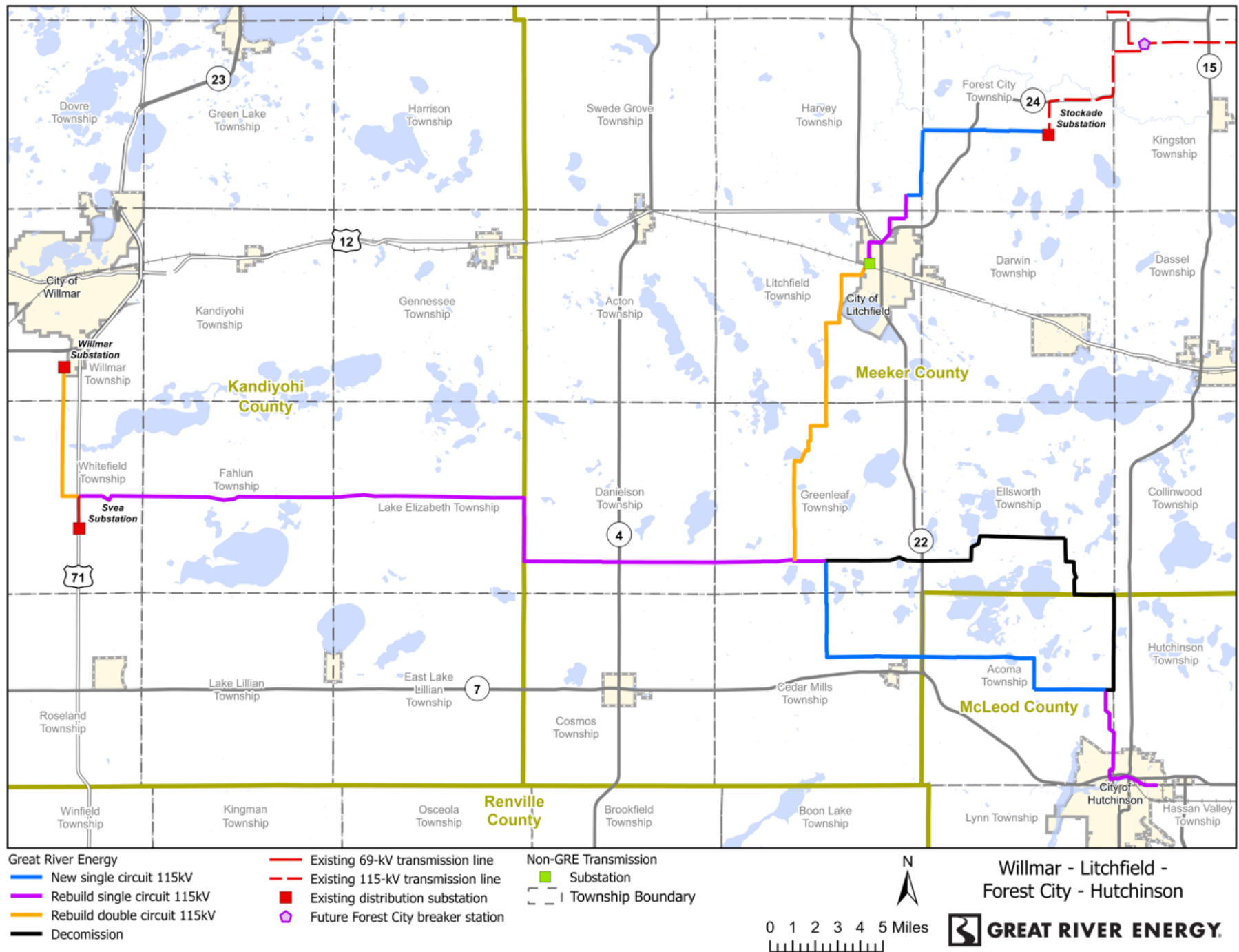
Voltage – 115-kV

Structures – 70- to 90-foot-tall wood poles

Spans – 350 to 400 feet apart

Right of way – 100-foot-wide right of way (50 feet on each side of the centerline)

Proposed project



Dale Aukee, Land Rights
612-840-4019 | dauke@greenergy.com

Mark Strohfus, Transmission Permitting & Compliance
763-445-5210 | mstrohfus@greenergy.com

06/xx/2025