



**Great River Energy**  
12300 Elm Creek Boulevard  
Maple Grove, MN 55369  
1-888-521-0130  
greatriverenergy.com



**Minnesota Valley Electric Cooperative**  
125 Minnesota Valley Electric Drive  
Jordan, MN 55352-0125  
952-492-2313  
mvec.net

# Laketown 115-kV transmission line project

Great River Energy, wholesale power provider to Minnesota Valley Electric Cooperative, proposes to build approximately 3 to 5 miles of 115-kilovolt (kV) electric transmission lines within Laketown and Dahlgren Townships in Carver County. A route permit, which includes an Environmental Analysis (EA), must be issued by the Minnesota Public Utilities Commission (PUC) before construction can begin.

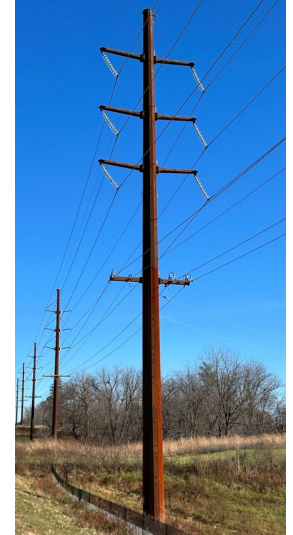
## Overview

Great River Energy is planning to construct a new 115-kV double-circuit transmission line to power a new distribution substation being built by Minnesota Valley Electric Cooperative at the northwest corner of the intersection of Carver County Road 10 and Laketown Road (see map on back). Great River Energy along with Minnesota Valley Electric Cooperative submitted an application for a route permit to the PUC on August 19, 2024.

Transmission line construction will generally use single direct-embedded steel poles 70 to 95 feet tall, placed 300 to 450 feet apart. Some specialty poles, including steel on foundation, may be required for larger angles. To provide a safe construction, operation and maintenance area, a 100-foot-wide right of way, 50 feet each side of the centerline, will need to be maintained to be clear of trees and vegetation.

## Permitting and public involvement

The PUC along with Department of Commerce, Energy Environmental Review and Analysis (EERA) staff held 2 information and scoping meetings regarding the project in October 2024 and solicited public comments through November 2024. As a result of this outreach, EERA staff have developed a scoping decision for matters to be addressed within the EA of the proposed project. The EERA will evaluate the proposed route included in the route application along with three route alternatives and an alternative alignment of the proposed route (see map on back).



*Typical 115-kV structures*

The full scoping decision is available on the PUC's eDocket website under Docket No. ET2/TL-24-132. The EA is anticipated to be completed and available in April 2025. Public hearings allowing for comments on the EA will be held in May 2025.

## Easements

Once the project has been approved by the PUC, landowners will be contacted to begin the easement acquisition process. Easements will be needed to provide adequate land rights for construction, operation and maintenance of the new line. Landowners will be presented with a copy of the route permit, easement and compensation settlement offer. Information will also be provided on the proposed design and pole locations, along with information on tree removal, construction access, settlement of damages and restoration of the right-of-way.

### Schedule

<b>State permitting</b>	Summer 2024 – Spring 2026
<b>Survey/design</b>	Spring 2026
<b>Easements/ Environmental permits</b>	Summer 2026 – Fall 2027
<b>Transmission line construction</b>	Fall 2027 – Summer 2028
<b>Energization</b>	Summer 2028

### Quick facts

**Length** – 3 to 5 miles

**Voltage** – 115-kV

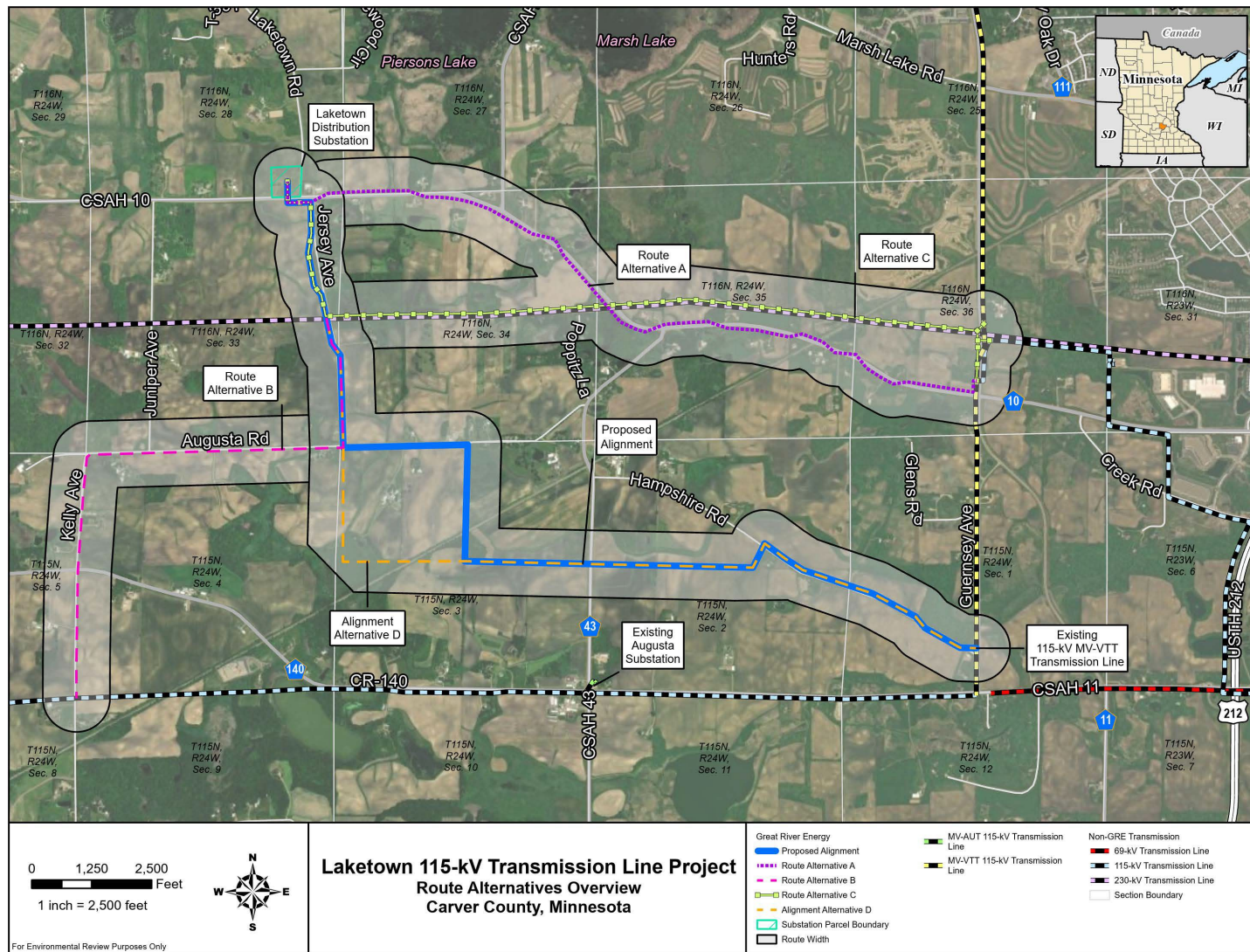
**Structures** – 70 to 95 feet tall

**Spans** – 300 to 450 feet apart

**Right of way** – Up to 100-foot-wide right of way, 50 feet on each side on the center line

**Permits** – MN Public Utilities Commission route permit

## Alternatives Under Review in the EA



### Great River Energy representatives

For project updates and information, visit [www.greatriverenergy.com/laketown](http://www.greatriverenergy.com/laketown) or contact any of the following

**Michelle Lommel**  
Sr. Field Representative, Land Rights  
763-445-5977 | [mlommel@greenergy.com](mailto:mlommel@greenergy.com)

**Michael Swenson**  
Transmission Permitting Specialist  
763-445-5979 | 952-807-4537 | [mswenson@greenergy.com](mailto:mswenson@greenergy.com)

2/17/2025

