



**GREAT RIVER ENERGY**

Great River Energy  
12300 Elm Creek Blvd  
Maple Grove, MN 55369  
763-445-5000  
grenergy.com



Stearns Electric Association  
900 Kraft Drive SW  
Melrose, MN 56352  
800-962-0655  
stearnselectric.org

# Pillsbury tap 115-kV transmission line project

Great River Energy, wholesale electric supplier to Stearns Electric Association, is planning to build approximately two miles of new 115,000-volt (115-kilovolt) overhead transmission line in Bruce Township, in southern Todd County. The transmission line is needed to enable Stearns Electric Association to maintain the reliability of their existing Pillsbury Substation to be able to reliably serve their members' electrical power needs.



Typical 115-kV single circuit structure and 115-kV with braced posts.

## Overview

This project will include the construction of approximately two miles of transmission line from the Pillsbury Substation, which is located at the southwest corner of the intersection of Grosbeak Road and County Road 105. The proposed route travels south approximately two miles along County Road 105 where it will connect to an existing transmission line operated by Minnesota Power.

## Public involvement

Great River Energy will hold a meeting in the form of an “open house” to provide project information. You are invited to attend the open house to review the project details and provide input.

Great River Energy and Stearns Electric Association staff will be available at the open house to discuss the project schedule and construction activities, as well as answer any questions.

## Permits and easements

The project will require a Route Permit from the Minnesota Public Utilities Commission or Todd County prior to any construction commencing. In addition, Great River Energy will work with other state, county, township and local authorities to acquire all approvals necessary to complete the work. Great River Energy will contact landowners along the proposed transmission line route to discuss easement agreements, tree removal, construction access and practices, and restoration.

## About Great River Energy

Great River Energy is a not-for-profit wholesale electric power cooperative which provides electricity to approximately 1.7 million people through its 27 member-owner cooperatives and customers. Through our member-owners, we serve two-thirds of Minnesota geographically and parts of Wisconsin.

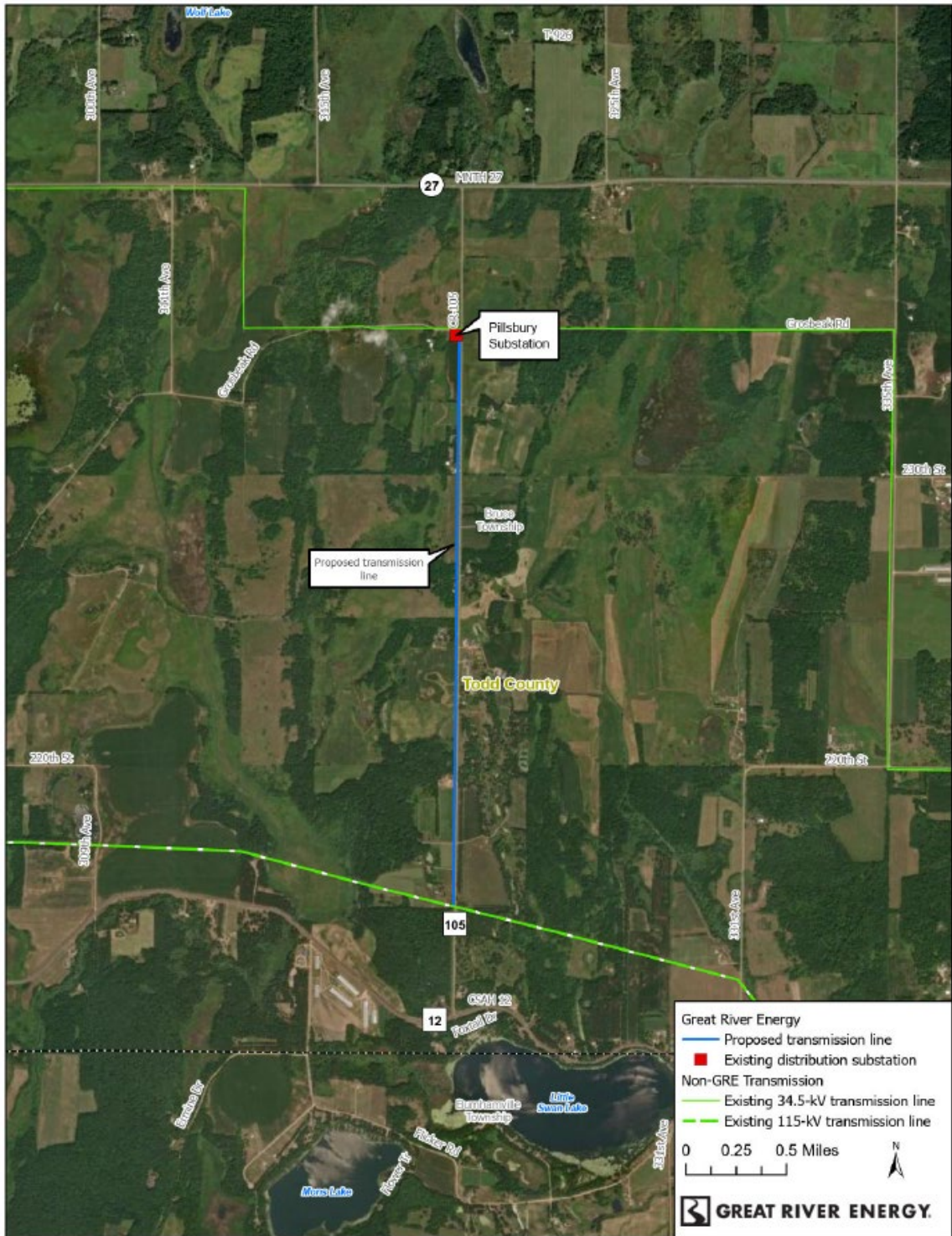
### Schedule

<b>Notifications</b>	Fall 2024
<b>Project permitting</b>	2025 – 2027
<b>Survey/design</b>	Spring 2027 – Summer 2028
<b>Easements/ Environmental permits</b>	Spring – Winter 2027
<b>Transmission line construction</b>	Spring – Fall 2028
<b>Energization</b>	Oct 2028

### Quick facts

- Length** – Approximately 2 miles
- Voltage** – 115-kV
- Structures** – Wood poles
- Spans** – 350 to 400 feet apart
- Right of way** – 100-foot-wide (50 feet each side of center of pole line)

## Proposed project



### Great River Energy representatives

For project updates and information, visit [greatriverenergy.com/pillsbury](http://greatriverenergy.com/pillsbury) or contact:

Anson Belcourt  
Field Representative | Land Rights  
763-349-0081 | [abelcourt@grenergy.com](mailto:abelcourt@grenergy.com)

Mark Strohus  
Project Manager | Transmission Permitting  
763-445-5210 | [mstrohus@grenergy.com](mailto:mstrohus@grenergy.com)