



**GREAT RIVER ENERGY**

**Great River Energy**  
12300 Elm Creek Blvd  
Maple Grove, MN 55369  
763-445-5000  
grenergy.com

**MVEC**

MINNESOTA VALLEY ELECTRIC COOPERATIVE

A Touchstone Energy® Cooperative

**Minnesota Valley Electric Cooperative**  
125 Minnesota Valley Electric Dr.  
Jordan, MN 55352  
1-800-282-6832  
mvec.net

# Le Sueur tap to St. Thomas tap switch rebuild

Great River Energy, wholesale power supplier to Minnesota Valley Electric Cooperative, owns the Le Sueur tap to St. Thomas tap switch 69-kV transmission line (MV-ST segment 3) in Le Sueur County. This 3.43-mile line, built in the early 1960s, runs east along County Road 11 (241st Ave) from the Le Sueur tap to the St. Thomas tap switch on 360th St. The rebuild will improve the reliability of the transmission system in the area and reduce risks associated with low voltage and transmission line overloading.

Great River Energy is planning to rebuild the transmission line along the existing corridor. This project will use existing rights. In some locations, deviations from the existing centerline may be necessary and may require new or amended easements which will be discussed with individual landowners.

## Overview

The project starts at the St. Thomas tap switch located at the intersection of Le Sueur County Road 11 and 320th Street and runs south, approximately 3.4 miles, along the east side of Country Road 11 to the existing Le Sueur tap located at the intersection of County Road 11 and 330th Street.

The transmission line will be rebuilt using single wood poles generally 55 to 75 feet above ground, placed 200 to 400 feet apart. Poles will likely be in similar locations to existing. Directional changes or angles may require guy wires and anchors to stabilize poles. In certain situations, engineered laminated poles may be used.



*Typical 69-kV wood single circuit structure without distribution underbuild*

## Permits & Easements

Great River Energy will work with county, state and federal government agencies to secure all necessary permits or permissions necessary for the project (e.g., conditional use, environmental, construction).

Great River Energy has existing prescriptive easement rights to rebuild, operate and maintain the transmission line. The easement area will continue to be maintained by clearing trees and vegetation to allow for the safe operation of the line. Some areas may require additional or amended easement rights. Landowners will be notified of the project construction dates and major activities.

Great River Energy welcomes project questions, comments and feedback.

### Schedule

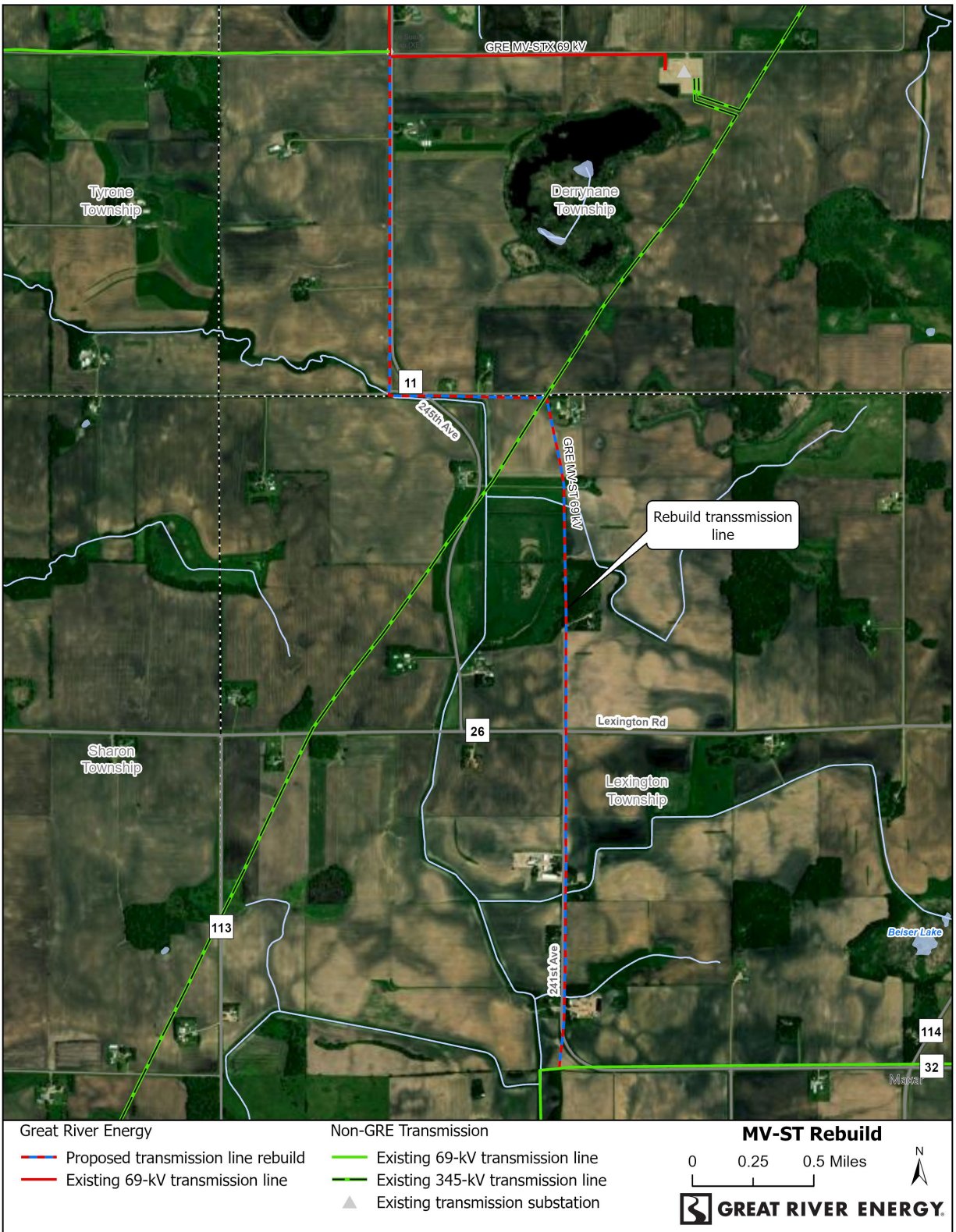
<b>Notifications/Survey</b>	Summer 2024
<b>Easements/ Environmental permits</b>	Fall/Winter 2024
<b>Engineering Design</b>	Winter 2023-2024
<b>Transmission line construction</b>	2025 - 2026

### Quick facts

- Length** – 3.43 miles
- Voltage** – 69-kV
- Structures** – Wood and/or laminated poles
- Spans** – 200 to 400 feet apart

## About Great River Energy

Great River Energy is a not-for-profit wholesale electric power cooperative which provides electricity to approximately 1.7 million people through its 27 member-owner cooperatives and customers. Through our member-owners, we serve two-thirds of Minnesota geographically and parts of Wisconsin.



**Great River Energy representatives**

For project updates and information contact:

Madalynn Brendon  
 Land Rights Field Representative  
 612-790-6300 | [mbrendon@greenergy.com](mailto:mbrendon@greenergy.com)

Michael Swenson  
 Transmission – Permitting Specialist  
 952-807-4537 | [mswenson@greenergy.com](mailto:mswenson@greenergy.com)