



Great River Energy
 12300 Elm Creek Boulevard
 Maple Grove, MN 55369
 1-888-521-0130
 greatriverenergy.com



Minnesota Valley Electric Cooperative
 125 Minnesota Valley Electric Drive
 Jordan, MN 55352-0125
 952-492-2313
 mvec.net

Laketown 115-kV transmission line project

Great River Energy, wholesale power provider to Minnesota Valley Electric Cooperative, proposes to build approximately 3 to 5 miles of 115-kilovolt (kV) electric transmission lines within Laketown and Dahlgren Townships in Carver County. A route permit must be issued by the Minnesota Public Utilities Commission (PUC) before construction can begin.

Overview

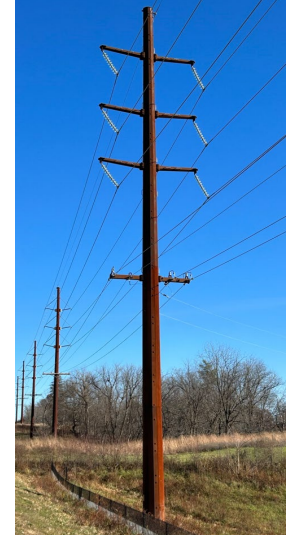
Great River Energy is planning to construct a new 115-kV double-circuit transmission line to power a new distribution substation being built by Minnesota Valley Electric Cooperative at the northwest corner of the intersection of Carver County Road 10 and Laketown Road (see map on back). Great River Energy is currently reviewing three potential routes for the new transmission line as depicted on the map.

Transmission line construction will generally use single direct-embedded steel poles 70 to 95 feet tall, placed 300 to 450 feet apart. Some specialty poles, including steel on foundation, may be required for larger angles. To provide a safe construction, operation and maintenance area, a 100-foot-wide right of way, 50 feet each side of the centerline, will need to be maintained to be clear of trees and vegetation.

Permitting and public involvement

Great River Energy will host a public open house in early 2024 to share additional project information with landowners, local government officials and other stakeholders to solicit input on the project.

Great River Energy will apply for a route permit from the PUC. During the route permitting process, all stakeholders will have opportunities to provide input on the project, including public meetings facilitated by the PUC and the Department of Commerce Energy Environmental Review and Analysis (DOC EERA). The DOC EERA will prepare an environmental assessment for the project.



Typical 115-kV structures

Great River Energy will work with county, state and federal agencies to secure any other required environmental or construction and road crossing permits.

Easements

Once the project has been approved by the PUC, landowners will be contacted to begin the easement acquisition process. Easements will be needed to provide adequate land rights for construction, operation and maintenance of the new line. Landowners will be presented with a copy of the route permit, easement and compensation settlement offer. Information will also be provided on the proposed design and pole locations, along with information on tree removal, construction access, settlement of damages and restoration of the right-of-way.

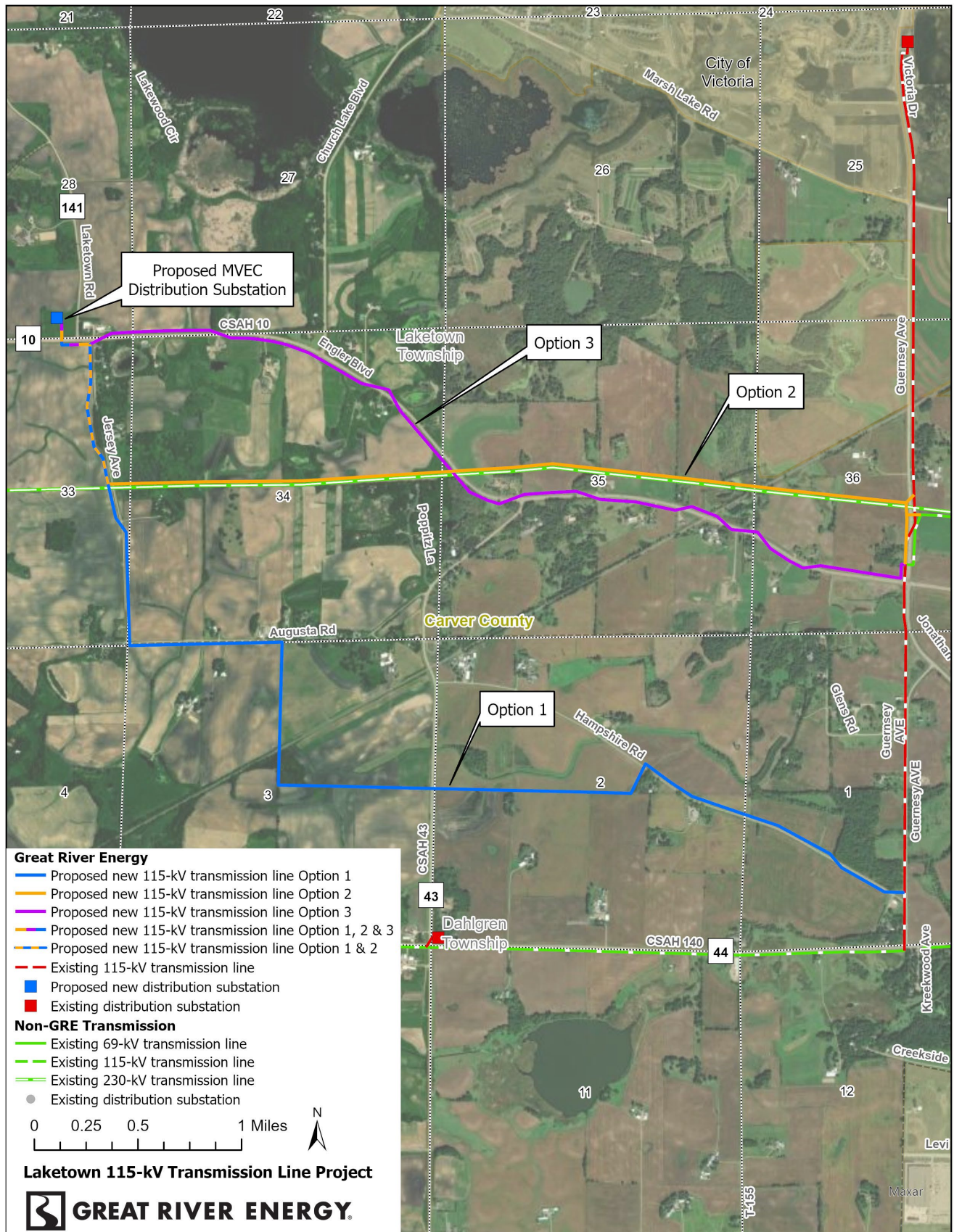
Schedule

State permitting	Summer 2024 – Spring 2026
Survey/design	Spring 2026
Easements/ Environmental permits	Summer 2026 – Fall 2027
Transmission line construction	Fall 2027 – Summer 2028
Energization	Summer 2028

Quick facts

Length	– 3 to 5 miles
Voltage	– 115-kV
Structures	– 70 to 95 feet tall
Spans	– 300 to 450 feet apart
Right of way	– Up to 100-foot-wide right of way, 50 feet on each side on the center line
Permits	– MN Public Utilities Commission route permit

Proposed project



Great River Energy representatives

For project updates and information, visit www.greenergy.com/laketown or contact any of the following

Michelle Lommel
 Sr. Field Representative, Land Rights
 763-445-5977 | mlommel@greenergy.com

Michael Swenson
 Transmission Permitting Specialist
 763-445-5979 | 952-807-4537 | mwenson@greenergy.com