

St Joseph 115-kV Transmission Line and Substation upgrade

Great River Energy, wholesale electric supplier to Stearns Electric Association, is proposing to construct 3.2 miles of 115-kV (115,000 volt) transmission line overtaking and replacing an existing 69-kV transmission line. Two substations and electrical apparatus along the route will require modifications to accept the higher voltage.

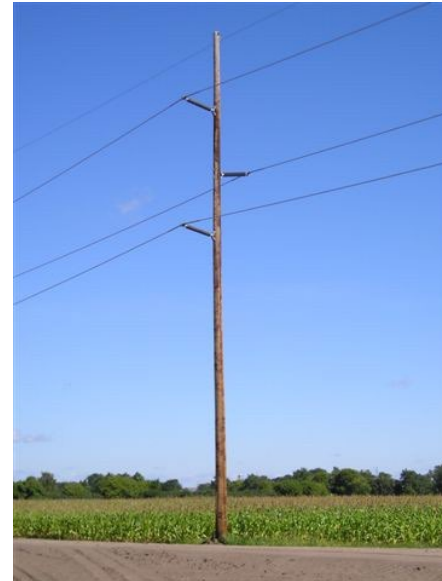
Over the last decade, Great River Energy has been upgrading the St. Joseph area to a more reliable 115-kV transmission system. This project will complete the area upgrade and loop the 115-kV system.

Overview

Beginning at Great River Energy’s West St. Cloud Substation the fence will be expanded to provide space for a new breaker and electrical apparatus. The new 115-kV transmission line will exit this substation and replace the existing 69-kV transmission line. The transmission line runs east along Ridgewood Road to a point where it will cross over to a new switch and tap line into Stearns Electric Association’s Westwood Substation. In this substation the existing 69-kV transformer will be replaced with a 115-kV transformer. The 115-kV transmission line then continues east for 1,100 feet, turns north for 1.4 miles to Mullen Road, then west along Mullen Road and ending at a new switch pole on the west side of County Highway 133 (see map on back).

Transmission line construction will generally use single wood poles 75 to 85 feet tall, placed 350 to 400 feet apart. Directional changes or angles will require guy wires and anchors to stabilize poles. Some specialty poles, including steel on foundation, may be required.

To provide a safe construction, operation and maintenance area, a 70-foot-wide right of way, 35-feet each side of the centerline, will need to be maintained to be clear of trees and vegetation.



Typical 115-kV structure

Permitting and easements

Great River Energy will submit a route permit application to the Minnesota Public Utilities Commission (PUC). After application, PUC and Department of Commerce, Energy Environmental Review and Analysis (DOC EERA) staff will facilitate public meetings and provide other opportunities for input from the public and regulatory agencies. The DOC EERA will prepare an environmental assessment for the project. Construction cannot begin until an approved route permit is granted by the PUC.

New or amended easements may be requested to provide adequate rights. Landowners along the proposed transmission line will be contacted to review the project and information will also be shared on tree removal, construction access and restoration of the right of way.

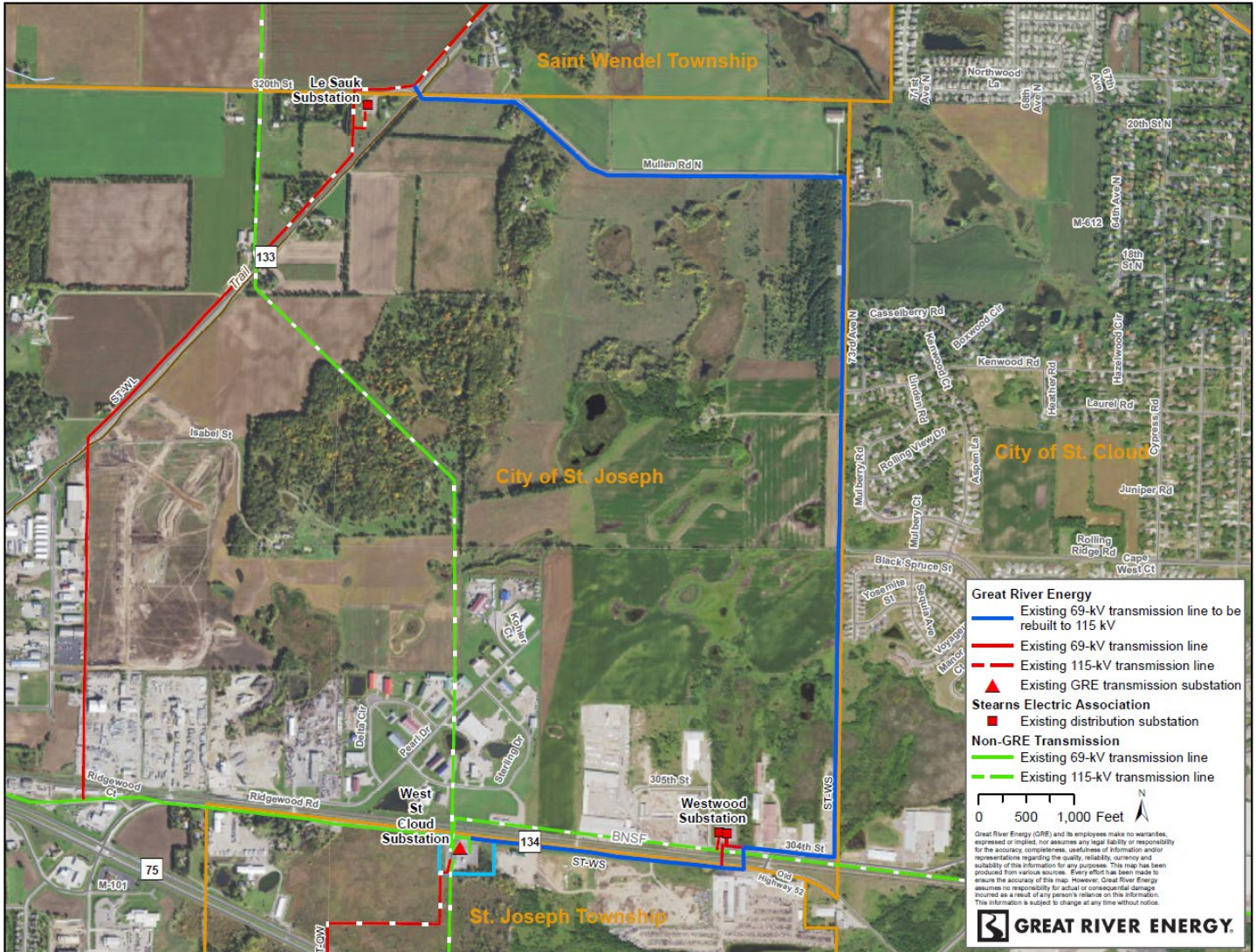
Schedule

| | |
|---|-------------|
| Notifications | Winter 2022 |
| State Permitting | 2022-2023 |
| Easements/ Environmental permits | Fall 2023 |
| Transmission line construction | Summer 2024 |

Quick facts

| | |
|---------------------|--|
| Length | – 3.2 miles |
| Voltage | – 115-kV |
| Structures | – Wood poles |
| Spans | – 350 to 400 feet apart |
| Right of way | – 70-foot-wide right of way; 35 feet on each side of the centerline. |

Proposed project



Great River Energy representatives

For project updates and information, visit greatriverenergy.com/stjosephupgrade or contact:

Dale Aukee, Senior Field Representative
 Land Rights
 612-840-4019 | daukee@greenergy.com

Mark Strohfus, Project Manager
 Transmission Permitting
 612-961-9820 | mstrohfus@greenergy.com

About Great River Energy

Great River Energy is a not-for-profit wholesale electric power cooperative that provides electricity to 28 member-owner distribution cooperatives. Together, our systems provide power to approximately two-thirds of Minnesota geographically and parts of Wisconsin, serving 700,000 families, farms and businesses.