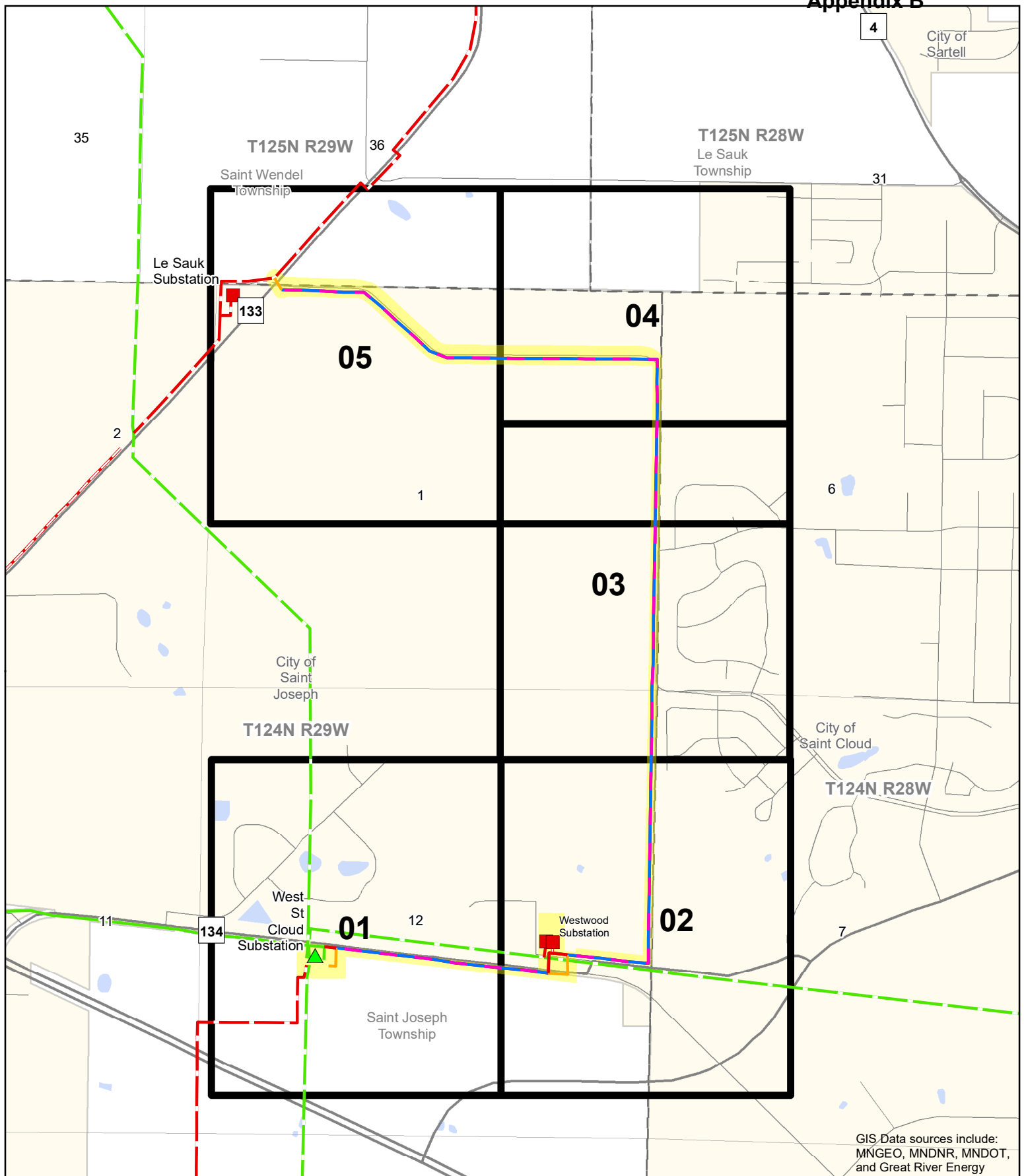


Appendix B

Detailed Route Maps



GIS Data sources include:
MNGEO, MNDNR, MNDOT,
and Great River Energy

Great River Energy

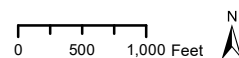
- Proposed 115-kV transmission line replacing existing 69-kV transmission line
- Proposed 115-kV transmission line
- Existing 69-kV transmission line to be removed
- - Existing de-energized 69-kV transmission line
- - Existing 115-kV transmission line

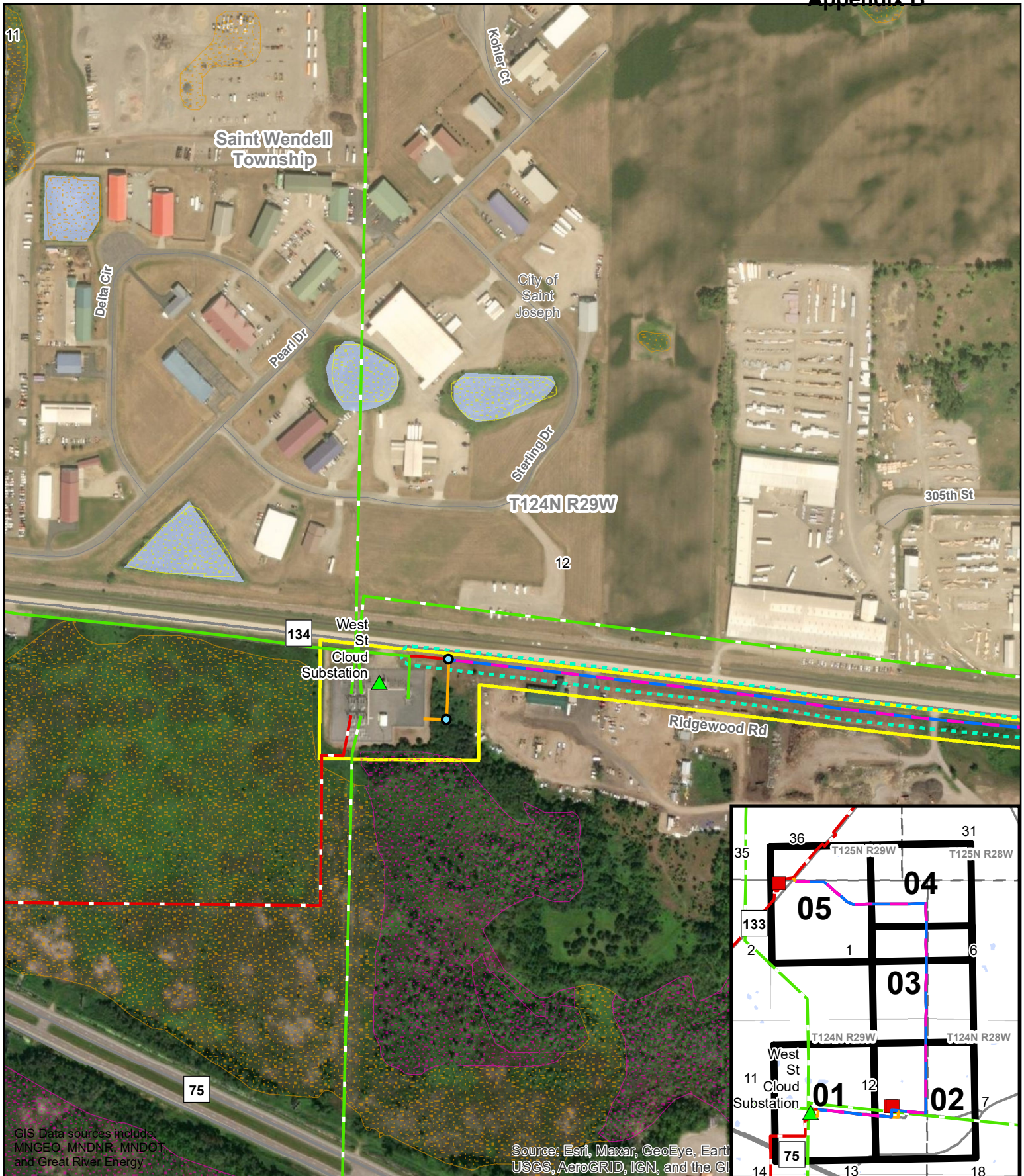
- ▲ Existing transmission substation
- Existing distribution substation
- Project route

Non-GRE Transmission

- Existing 69-kV transmission line
- - Existing 115-kV transmission line

ST-WW 69-kV to 115-kV Conversion



**Great River Energy**

- Proposed 115-kV transmission line replacing existing 69-kV transmission line
- Proposed 115-kV transmission line
- Existing 69-kV transmission line to be removed
- Existing 115-kV transmission line
- Existing transmission substation
- Potential deadend structure

Project route

- Proposed right-of-way

Non-GRE Transmission

- Existing 69-kV transmission line
- Existing 115-kV transmission line

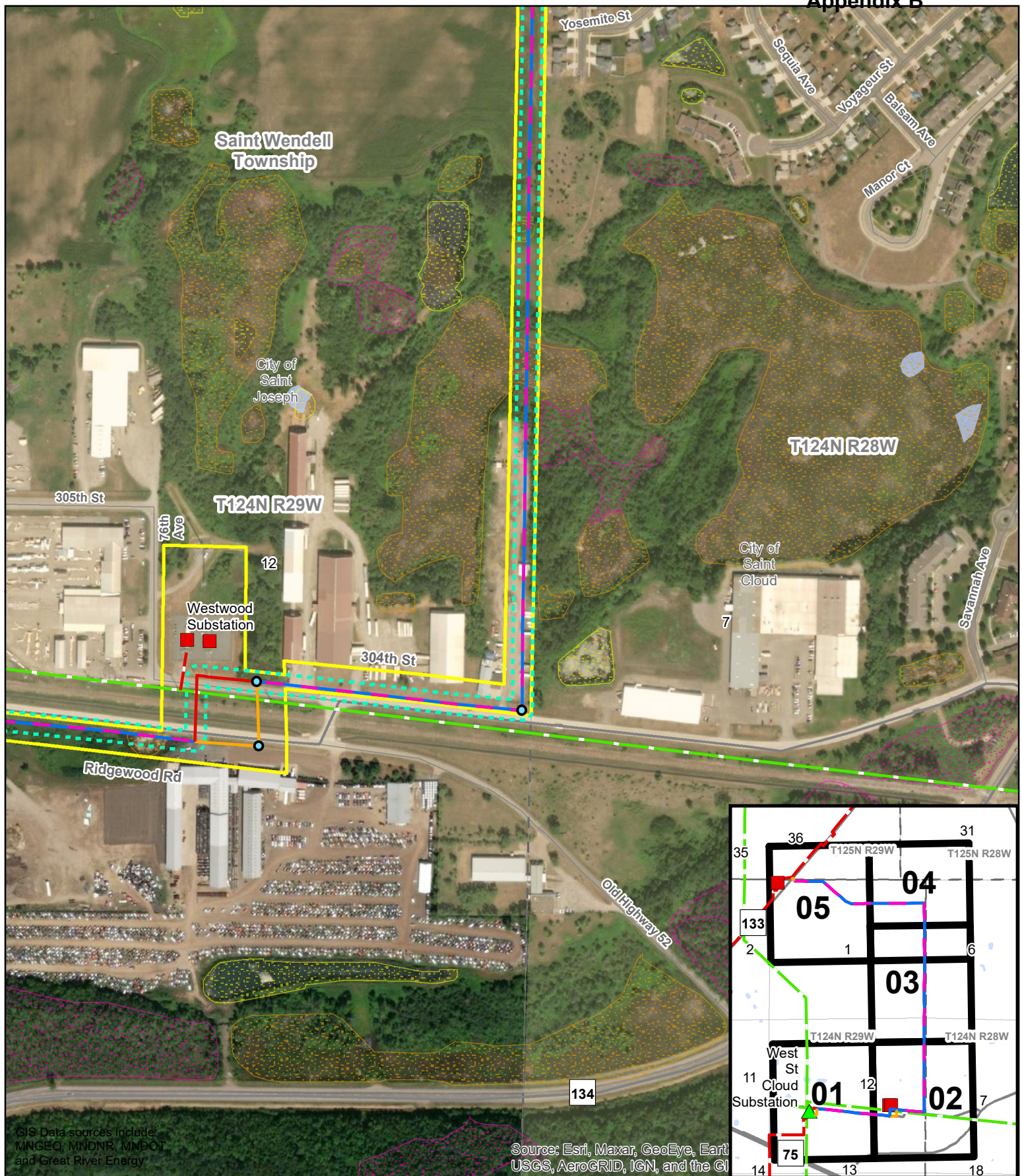
NWI Wetlands

- Freshwater Emergent Wetland
- Freshwater Forested / Shrub Wetland

Freshwater Pond
ST-WW 69-kV to 115-kV Conversion
 Page 1 of 5

0 250 500 Feet



**Great River Energy**

- Proposed 115-kV transmission line replacing existing 69-kV transmission line
- Proposed 115-kV transmission line
- Existing 69-kV transmission line to be removed
- Existing 115-kV transmission line
- Existing distribution substation
- Potential deadend structure

Project route

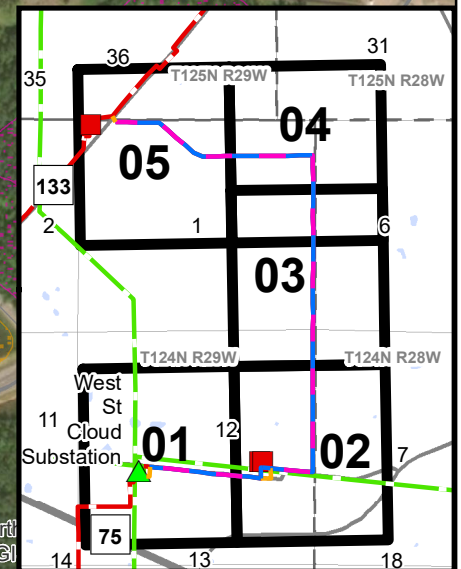
- Proposed right-of-way

Non-GRE Transmission

- Existing 115-kV transmission line

NWI Wetlands

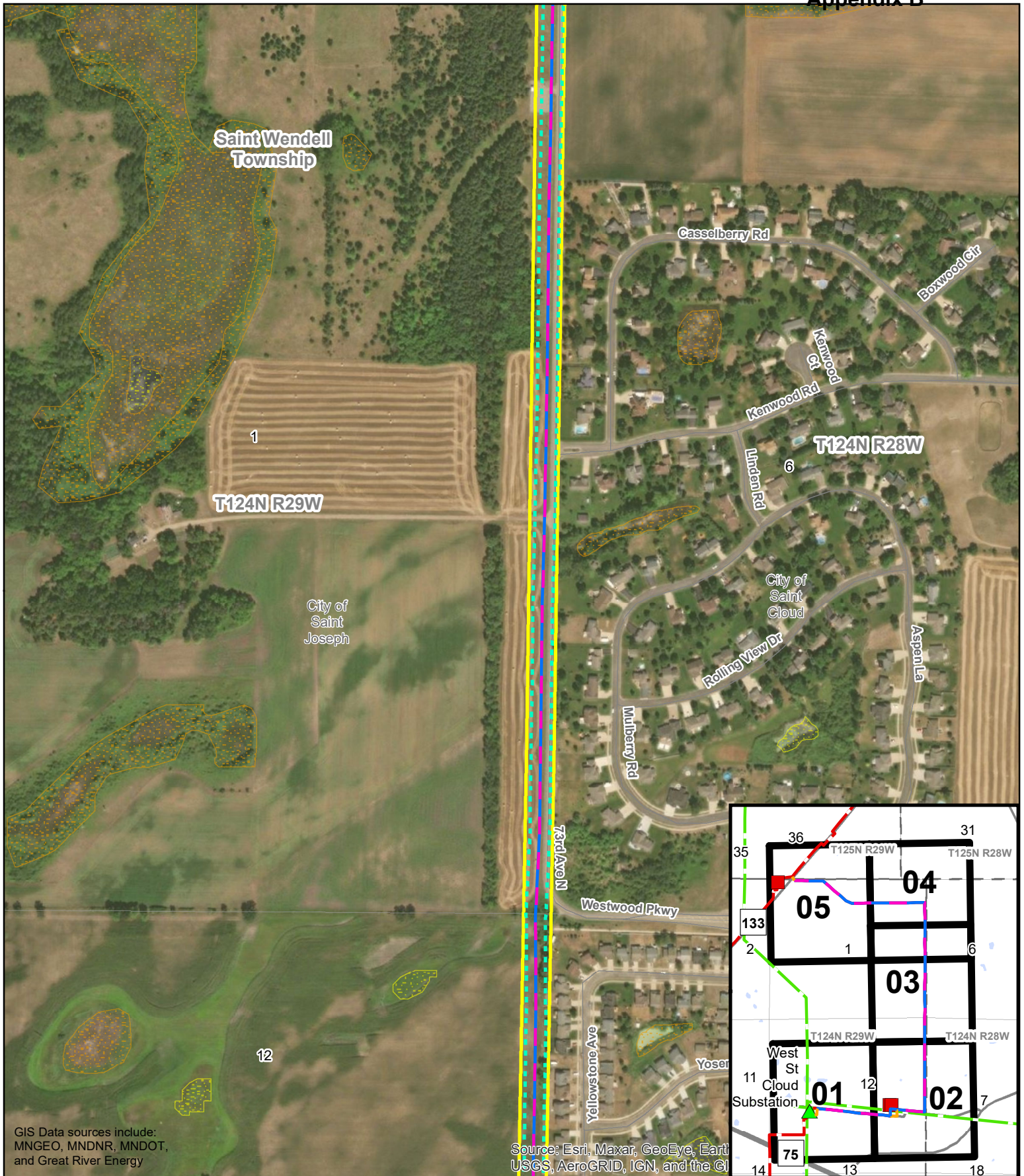
- Freshwater Emergent Wetland
- Freshwater Forested / Shrub Wetland
- Freshwater Pond

**ST-WW 69-kV to 115-kV Conversion**

Page 2 of 5

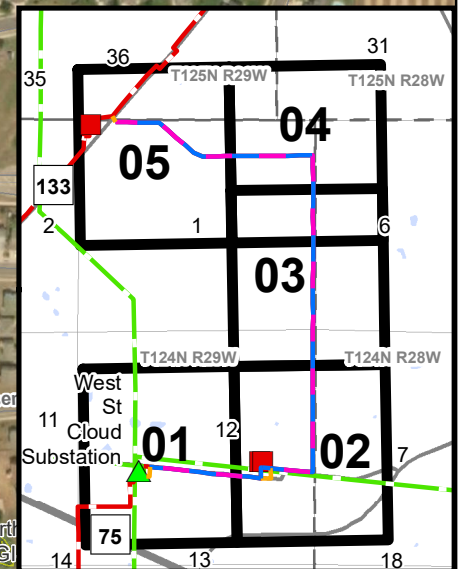
0 250 500 Feet





GIS Data sources include:
MNGEO, MNDNR, MNDOT,
and Great River Energy

Source: Esri, Maxar, GeoEye, Earthstar, USGS, AeroGRID, IGN, and the GIS User Community



Great River Energy

- Proposed 115-kV transmission line replacing existing 69-kV transmission line
- Project route
- Proposed right-of-way

NWI Wetlands

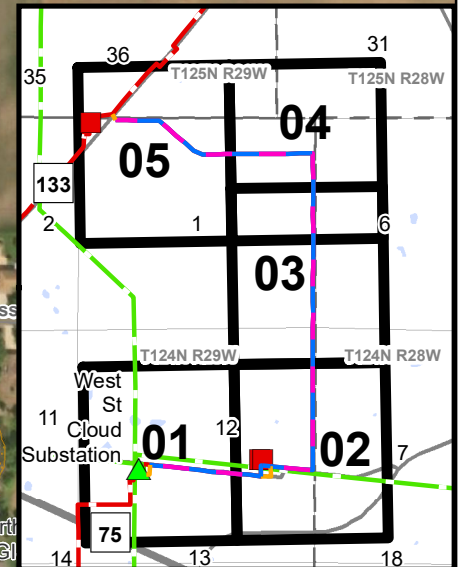
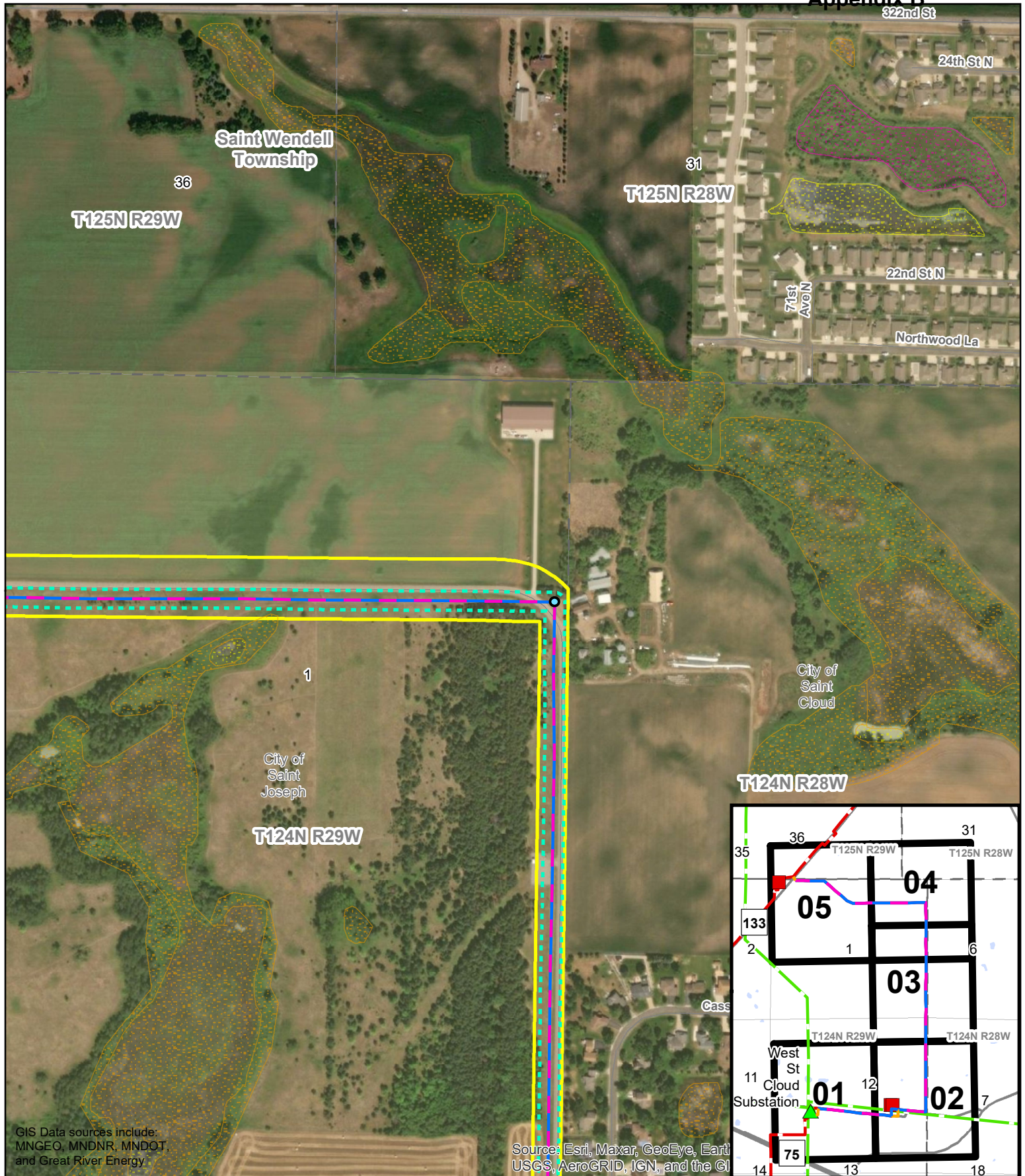
- Freshwater Emergent Wetland
- Freshwater Pond

**ST-WW 69-kV to
115-kV Conversion**

Page 3 of 5

0 250 500 Feet





Great River Energy

- Proposed 115-kV transmission line replacing existing 69-kV transmission line
- Potential deadend structure
- Project route
- Proposed right-of-way

NWI Wetlands

- Freshwater Emergent Wetland

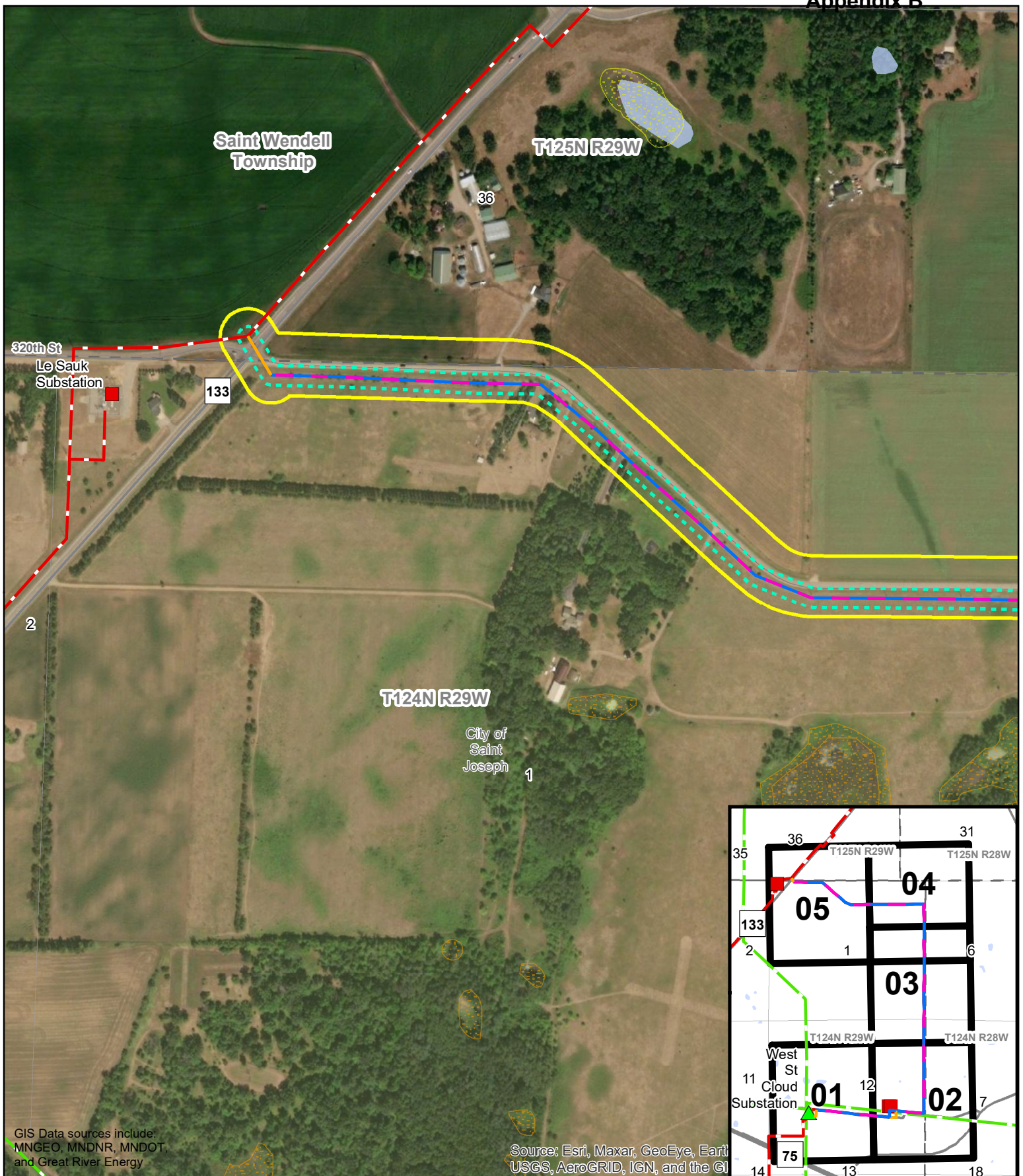
- Freshwater Forested / Shrub Wetland
- Freshwater Pond

ST-WW 69-kV to 115-kV Conversion

Page 4 of 5

0 250 500 Feet



**Great River Energy**

- Proposed 115-kV transmission line replacing existing 69-kV transmission line
- Proposed 115-kV transmission line
- Existing 115-kV transmission line
- Existing distribution substation
- Project route
- Proposed right-of-way

Non-GRE Transmission

- Existing 115-kV transmission line
- NWI Wetlands**
- Freshwater Emergent Wetland
 - Freshwater Pond

**ST-WW 69-kV to
115-kV Conversion**

Page 5 of 5

0 250 500 Feet

