

Lake Mary Substation and 115-kV transmission tap line

Runestone Electric Association (REA) intends to re-build the "Lake Mary" electric substation from 41.6-kV to 115-kV service. The substation is currently located on REA's property in Alexandria, Minnesota. To allow for expansion, the substation will be moved to the southeast corner of REA's property and rebuilt. Great River Energy proposes to construct an approximately 1.4 mile, 115-kV transmission tap line called the RU-LMT line, to power the new substation project. The project will increase needed capacity of the substation and improve the reliability of the electrical system in the Alexandria area.

Overview

Great River Energy proposes to connect into the Missouri River Energy Services' (MRES) AA-129 115-kV transmission line 723 feet south of I-94. The project will then run south 0.52 of a mile, cross over County Road 87 and connect to the existing Great River Energy RU-LMT 41.6-kV transmission line. The project will then follow the existing RU-LMT corridor west for 0.38 of a mile and then south for approximately 790 feet, where the new line will turn west and run to the median between Archer Parkway and State Highway 29. The line will follow the median south, approximately 850 feet, turn west, cross Highway 29 and run into the new Lake Mary Substation. In the event location in the median is precluded, the line will be placed either along the existing RU-LMT route or, on the east side of Archer Parkway (see map on back).

The proposed transmission line will generally require a 100-foot wide right of way, with 50 feet either side of the centerline. Property owners will be contacted to discuss the acquisition of new or modified easements for the transmission line right-of-way.



Typical 115 kV wood single circuit structure

The poles will be primarily round wood and may include wood laminate or steel poles also. The poles will range in height from 65 to 90 feet above ground. (see example photo above). The span between poles will range from 300 to 400 feet apart.

Public involvement

Douglas County will conduct the route permitting process for this project. The county will notify interested parties regarding the process and participation.

Trees

The project will require removal of trees and vegetation along the proposed transmission line right-of-way for safety and maintenance purposes. A representative from Great River Energy will contact property owners before any tree work takes place.

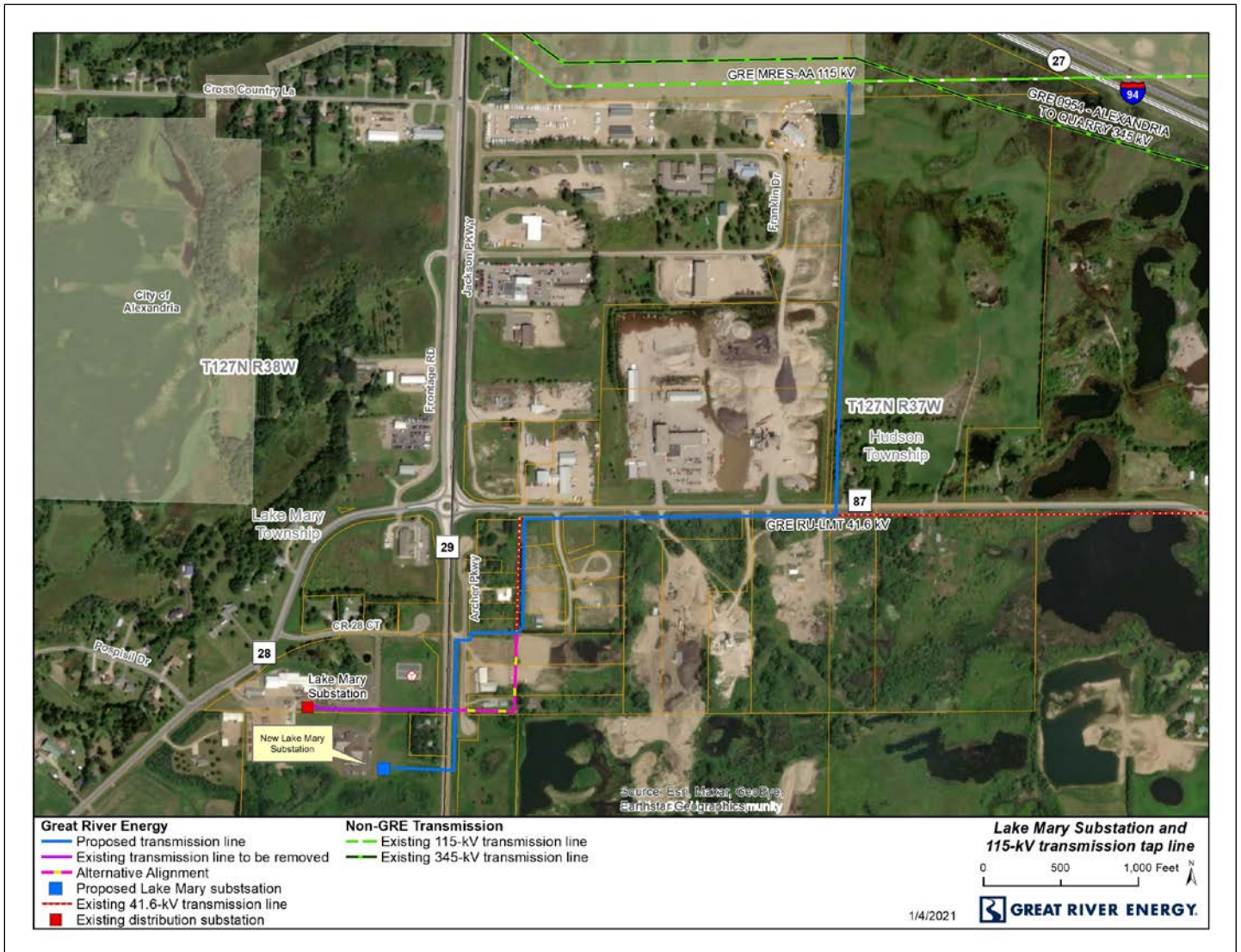
Schedule

Notifications	Winter – 2020/2021
Permitting	Winter - Spring 2021
Survey/design	Spring - Summer 2021
Easements/Acquisition	Summer - Fall 2021
Transmission line construction	Summer – Fall 2022
Energization	Fall - Winter 2022

Quick facts

Length – Approximately 1.4 miles
Voltage – 115 kV
Structures – Wood, wood laminate and steel poles
Spans – 300 to 400 feet apart
Right of way – 100-foot-wide right of way. 50 feet on each side of the centerline.
Permits – As noted

Proposed project



Great River Energy representatives

For project updates and information, visit greatriverenergy.com/lakemary or contact:

Peter M. Schaub, Sr. Field Representative
Land Rights
612-801-7370 | pschaub@greenergy.com

Marsha Parlow, Transmission Permitting Specialist
Transmission Permitting and Compliance
612-345-1212 | mparlow@greenergy.com

About Great River Energy

Great River Energy is a not-for-profit wholesale electric power cooperative which provides electricity to 28 member-owner distribution cooperatives. Together, our systems provide power to approximately two-thirds of Minnesota geographically and parts of Wisconsin, serving 700,000 families, farms and businesses.

1/8/2020