

Lake Eunice 115-kV Transmission Conversion

Lake Region Electric Cooperative (LREC) and Great River Energy propose to convert and operate LREC’s Lake Eunice Substation and about a 0.8-mile portion of Great River Energy’s 41.6-kV LR-LET transmission line to 115-kV standards. These facilities are located in Lake Eunice Township, Becker County, Minn. These upgrades will move the Lake Eunice Substation from a radial to a loop feed and improve the reliability of transmission service to the Lake Eunice Substation.

Overview

The proposed project will be located in Section 35, Township 138N, Range 42W, Becker County (see map on back).

This project will consist of two phases. The first phase will consist of LREC converting the existing Lake Eunice Substation from 41.6-kV to 115-kV service.

In phase two, Great River Energy will remove the 41.6-kV component of the LR-LET transmission line and convert 0.8 miles of the LR-LET line to 115-kV standards. Specifically, this line will connect to the Great River Energy owned “LR-CF” 115-kV transmission line near LR-LET structure #18 and run approximately 0.8 miles to the Lake Eunice Substation.

- The structures for the converted line will consist primarily of single wood poles with some steel or wood-laminate poles (see photo). Distance between the poles will range from 200 to 400 feet. The existing transmission line currently carries distribution line underbuilt on the poles and the rebuilt lines will also carry distribution line.
- The rebuilt lines will generally remain in or near the current centerline; however, existing structures and other construction considerations may require that some portions be offset from the centerline.



Typical 115 kV wood single circuit structure with distribution underbuild

Where necessary, property owners will be contacted to discuss acquisition of easements for additional transmission line rights-of-way. Existing easements will generally be used for the line conversion.

Removal of trees and vegetation along the transmission line right-of-way will be necessary for safety and maintenance purposes. A representative from Great River Energy will contact property owners before any tree work takes place to discuss the work and access to the easement area. Following construction of the transmission lines, Great River Energy will promptly repair any damages that may occur.

Permitting and Public Involvement

Great River Energy will seek a Route Permit for the project from the Minnesota Public Utilities Commission. In this state permitting process, the public is afforded several opportunities to provide feedback on the project.

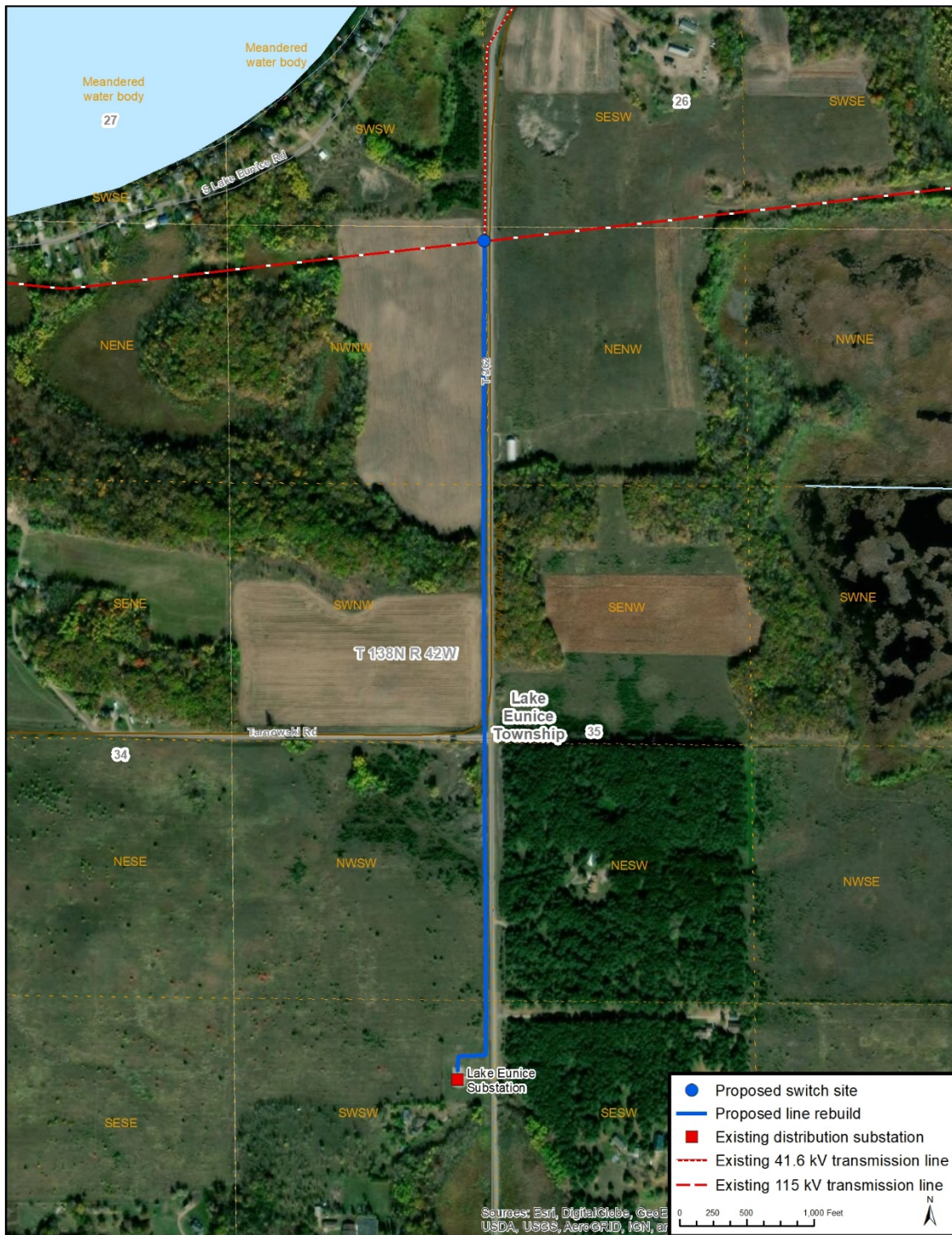
Schedule

Notifications	Winter/Spring 2019
State permitting	Spring 2019 – Spring 2020
Survey/design	Spring 2019 – Summer 2020
Easements/ Environmental permits	Spring 2020 – Summer 2020
Transmission line construction	Fall 2020 – Winter 2020
Energization	Winter 2020

Quick facts

Length – 0.8 mile
Voltage – 115 kV
Structures – Wood poles
Spans – 200 to 300 feet apart
Right of way – 80-foot-wide right of way with 40 feet on each side of the centerline
Permits – PUC route permit

Proposed project (map)



Great River Energy representatives

For project updates and information, visit greatriverenergy.com/lakeeunice or contact:

Peter M. Schaub Sr., Field Representative
Land Rights
(763) 445-5976 or 1-888-521-0130 | pschaub@greenergy.com

Marsha Parlow, Transmission Permitting Specialist
Transmission Permitting and Compliance
763-445-5215 | mparlow@greenergy.com

About Great River Energy

Great River Energy is a not-for-profit electric cooperative providing wholesale power to 28 member-owner distribution cooperatives. Together, our systems provide power to approximately two-thirds of Minnesota geographically and parts of Wisconsin, serving 695,000 families, farms and businesses.