

69-kV transmission line reroute

Great River Energy, wholesale electric supplier to Kandiyohi Power Cooperative, is proposing a 4-mile relocation of an overhead 69-kV (69,000 volt) transmission line. The project will replace 7 miles of aging transmission line built in 1948 and supply a more reliable looped electric service to Kandiyohi Power Cooperative’s Prairie Woods Substation located on County Road 40 in New London. This project is an extension of a required transmission line relocation to accommodate the Minnesota Hwy 23 four-lane expansion.

Overview

Replacing and relocating the existing transmission line is a priority project for Great River Energy. The current line has limited emergency and maintenance access including significant elevation changes, narrow strips of land, wetlands and a river crossing. This relocation will implement modern construction and accessibility standards and lead to improved reliability for the area.

The proposed relocation begins west of the intersection of MN Highway 23 and 199th Avenue NE. Initially, the route runs along the west side of MN Highway 23 then crossing to the east. At MN Highway 9 the route turns north to Kandiyohi County Road 40 then west to the Prairie Woods Substation (see map on back).

Transmission line construction will generally use single wood or steel poles 70 to 80 feet above ground, placed 350 to 400 feet apart. Specialty poles may be required. Directional changes or angles require guy wires and anchors to stabilize poles.



Typical 69-kV Circuit

A 70-foot-wide right of way, 35-feet each side of the centerline, will be cleared of trees and vegetation to provide safe construction, operation and maintenance areas.

Permits and easements

Kandiyohi County and the City of New London do not require permitting for this essential service. Great River Energy will notify and work with state and federal agencies to secure any required permits. A route survey and preliminary design will be completed.

New easements to construct, operate and maintain the relocated transmission line are required. Landowners along the transmission line route will be contacted to discuss tree removal, easement details and compensation.

Schedule

Notifications	Summer 2021
Design	Summer 2021
Easements/ Environmental permits	Fall 2021
Transmission line construction	Summer/Fall 2022

Quick facts

Length – 4 miles
Voltage – 69 kV
Structures – Wood poles
Spans – 350 to 400 feet apart
Right of way – 70-foot-wide right of way; 35-feet on each side of the centerline.

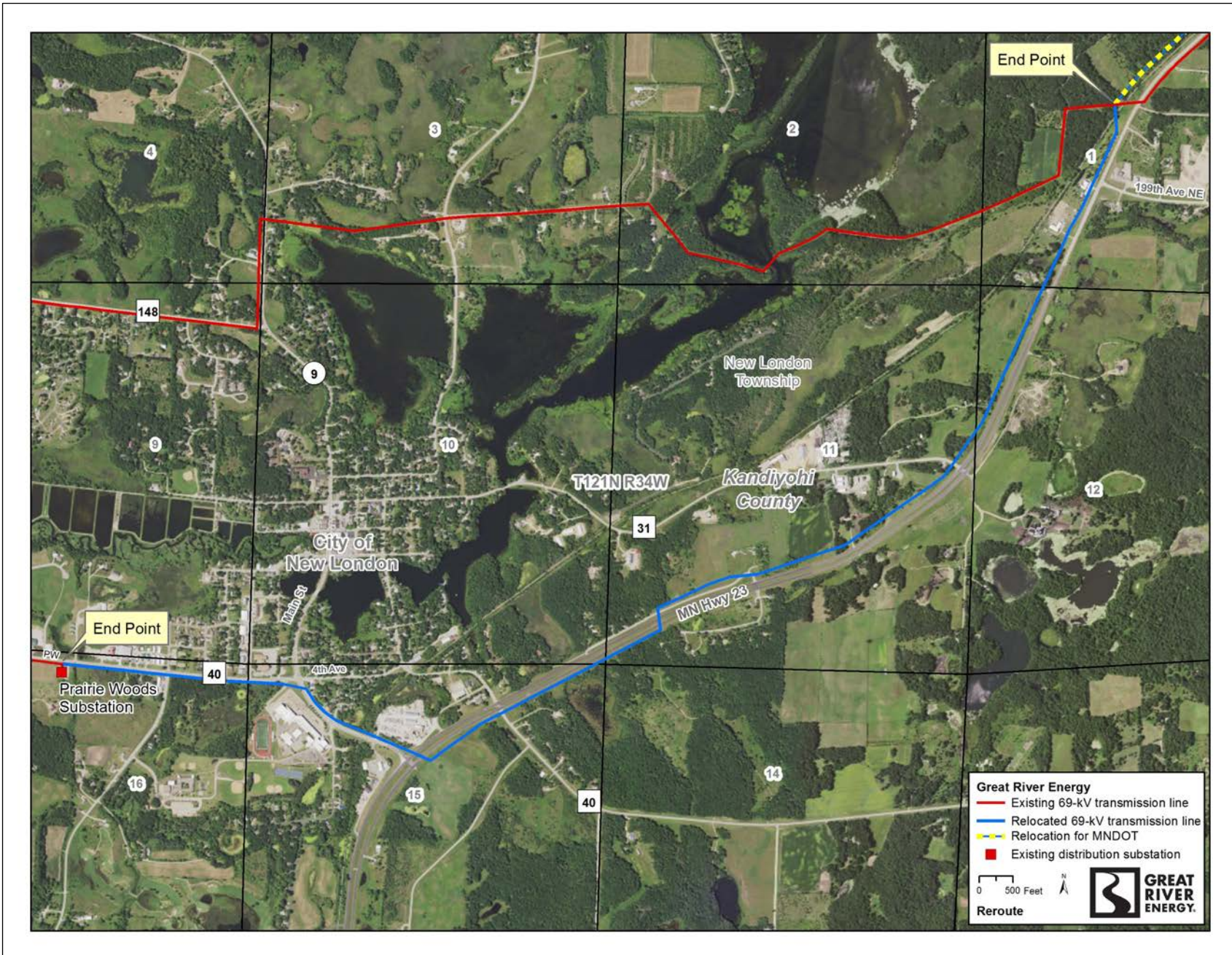
Great River Energy representatives

For project updates and information, visit greatriverenergy.com/newlondon or contact:

Dale Aukee, Sr. Field Representative
 Land Rights
 612-840-4019 | daukee@grenergy.com

Marsha Parlow, Transmission Permitting Specialist
 Transmission Permitting and Compliance
 612-345-1212 | mparlow@grenergy.com

Proposed project



About Great River Energy

Great River Energy is a not-for-profit wholesale electric power cooperative which provides electricity to 28 member-owner distribution cooperatives. Together, our systems provide power to approximately two-thirds of Minnesota geographically and parts of Wisconsin, serving 700,000 families, farms and businesses.