

Mankato and Decoria Townships 69-kV transmission line rebuild and reroute

Great River Energy, wholesale power supplier to Benco Electric Cooperative, owns the 69-kV transmission line in Mankato and Decoria townships. This line was built in the mid-1940s and due to its age and condition needs to be replaced. Additionally, the Le Sueur River’s changing course, dramatic erosion and significant elevation changes have created serious environmental and maintenance issues creating electric reliability concerns. For these reasons, Great River Energy is proposing to rebuild and reroute portions of this transmission line to ensure the safe reliable delivery of electric power. Once the rerouted portions are constructed, the existing line will be removed.

Overview

The rebuild begins at Great River Energy’s Stoney Creek Substation, on 200th Street and Pohl Road, then runs south to 192nd Street. Here the reroute begins, west along 192nd Street to County Highway 8. Then turning south following along County Highway 8 and connecting to Benco Electric Cooperative’s Decoria Substation. The line then continues east along County Highway 8/179th Street to 586th Avenue reconnecting to Great River Energy’s BE-DM transmission line. The map on the back shows the project area and proposed route.

Transmission line construction will generally use single wood poles 70 to 80-feet above ground, placed 350 to 400-feet apart. Some specialty poles and longer or shorter spans may be required. Directional changes or angles will require guy wires and anchors to stabilize poles. To provide a safe construction, operation and maintenance area, a 70-foot-wide right of way, 35-feet each side of the centerline, will be cleared of trees and vegetation.



Typical 69-kV Circuit

Permits and easements

Great River Energy will apply for a conditional use permit from Blue Earth County. Great River Energy will work with state and federal agencies to secure any required permits. Landowners will be provided project details and are encouraged to provide input.

Great River Energy will use its existing easement rights along the Pohl Road segment and acquire new easements for the remainder of the project.

Schedule

Notifications	Fall 2021
County CUP	Fall 2021
Easements/ Environmental permits	Winter 2021/2022
Transmission line construction	2023

Quick facts

Length – **rebuild 1.5 miles, reroute 5.5 mile**

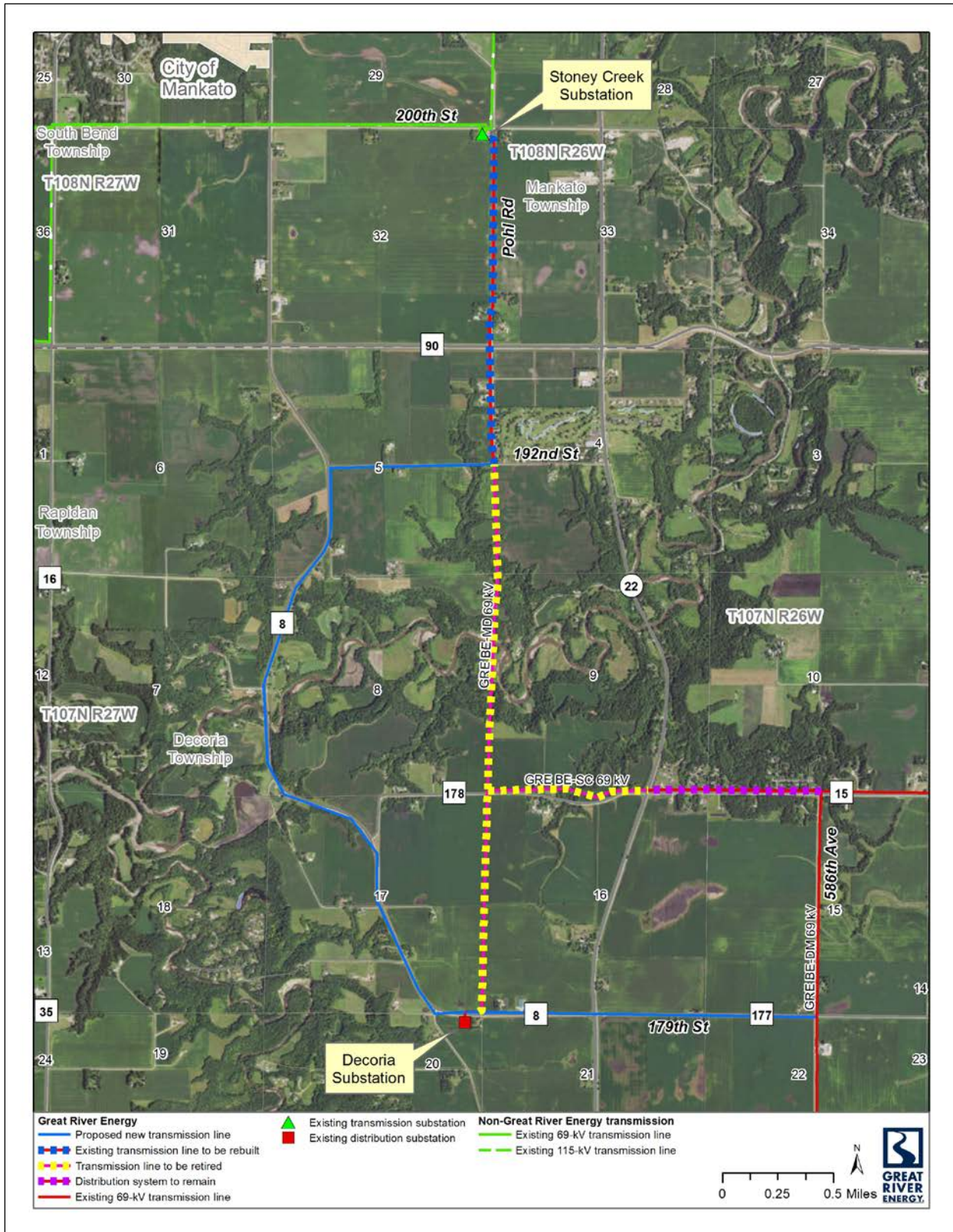
Voltage – **69 kV**

Structures – **Wood poles**

Spans – **350 to 400 feet apart**

Right of way – **70-foot-wide right of way; 35 feet on each side of the centerline.**

Proposed project



Great River Energy representatives

For project updates and information, visit greatriverenergy.com/decoria or contact:

Dale Aukee, Sr. Field Representative
 Land Rights
 612-840-4019 | daukee@greenergy.com

Marsha Parlow, Transmission Permitting Specialist
 Transmission Permitting and Compliance
 612-345-1212 | mparlow@greenergy.com

About Great River Energy

Great River Energy is a not-for-profit wholesale electric power cooperative which provides electricity to 28 member-owner distribution cooperatives. Together, our systems provide power to approximately two-thirds of Minnesota geographically and parts of Wisconsin, serving 700,000 families, farms and businesses.